

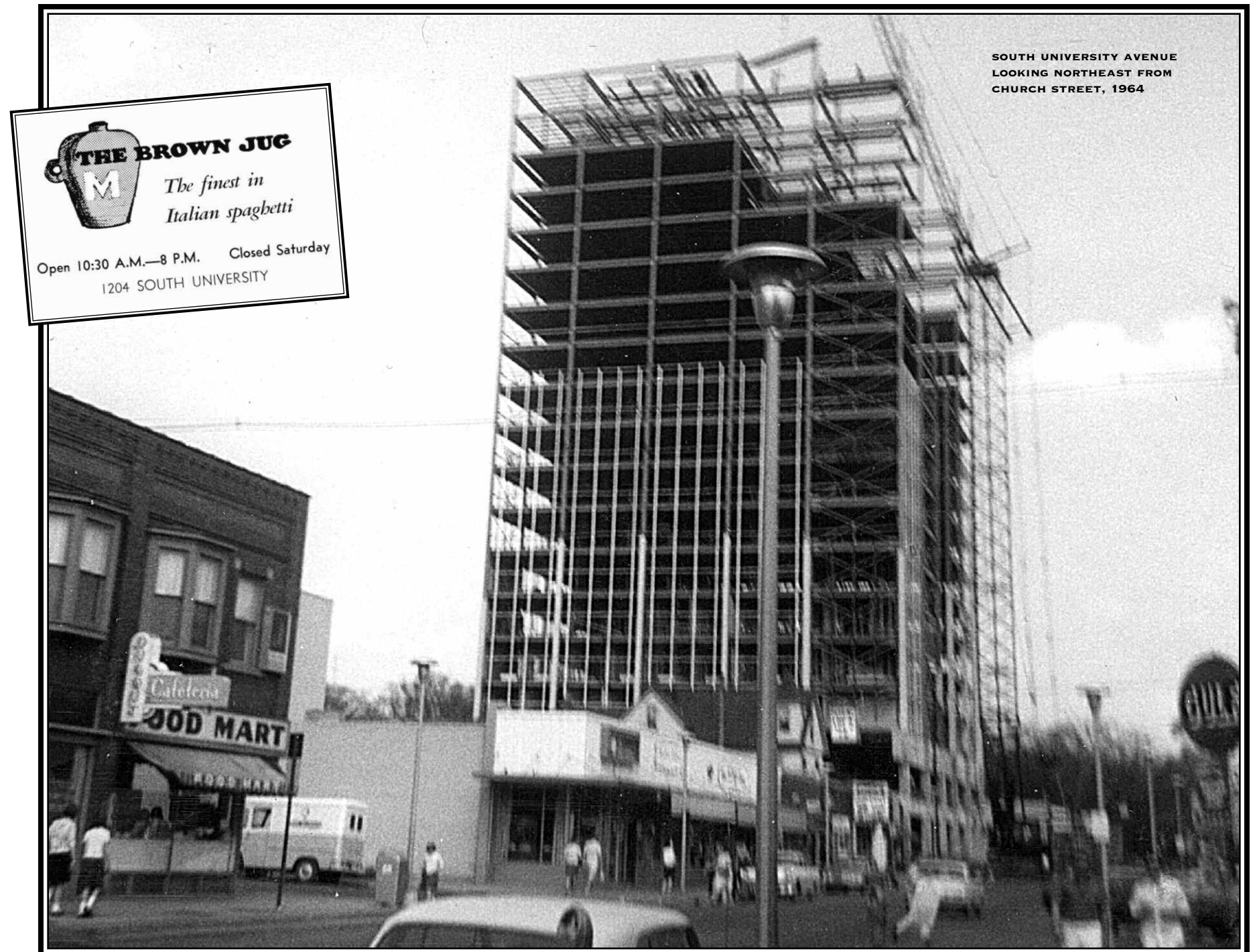
SOUTH UNIVERSITY LOOKING NORTHEAST FROM CHURCH STREET, CA. 1957



SOUTH UNIVERSITY LOOKING NORTHWEST FROM FOREST AVENUE, 1954



SOUTH UNIVERSITY LOOKING NORTHEAST FROM CHURCH STREET, 1960



SOUTH UNIVERSITY AVENUE LOOKING NORTHEAST FROM CHURCH STREET, 1964

THE BROWN JUG
The finest in Italian spaghetti
 Open 10:30 A.M.—8 P.M. Closed Saturday
 1204 SOUTH UNIVERSITY

HOUSES TO HIGH RISES ON SOUTH UNIVERSITY AVENUE

When John MacGregor built this commercial building in 1915, houses still lined South University from Church Street to Forest Avenue. By 1957 those houses were fronted by one-story shop additions. Most upper floors remained residential. In 1960 a one-story commercial building (lower inset), located on the corner to your right,

replaced the Lighthouse Coffee Shop, adjacent stores, and the large house in back.

University Towers (under construction above right) was completed in 1965. At eighteen stories, it was then the tallest building in town. The Food Mart, seen in the photo, had opened on this corner the year before in MacGregor's building. It supplied groceries for the neighborhood for twenty years.

The Brown Jug (circled above left) opened in 1935 on the other side of the street. A favorite restaurant with students and alumni, its name celebrated the trophy for UM's historic football rivalry with the University of Minnesota. The Campus Theater opened in 1957 down the block from the Brown Jug. It catered to a growing art film audience, which lined up to see the latest Fellini or Bergman release.



STUDENTS AND TOWNSFOLK IN THE EARLY 1960S SHARED THE FUN OF APPLAUDING OR HISSING DURING MOVIES.