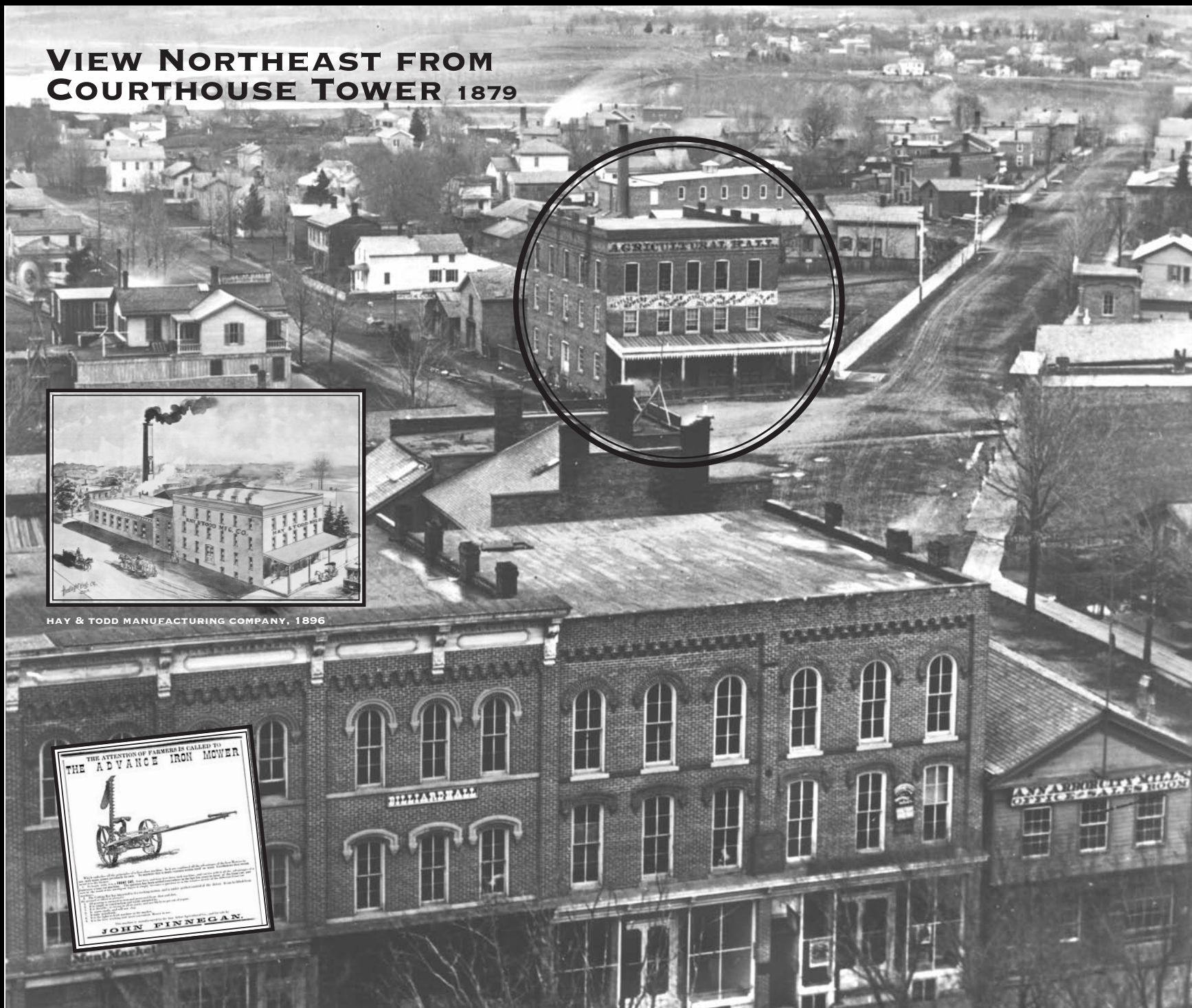




A SUPPLY SIDE OF TOWN



VIEW NORTHEAST FROM COURTHOUSE TOWER 1879



HAY & TODD MANUFACTURING COMPANY, 1896



By the 1880s the area between downtown and the railroad along the Huron River supplied lumber, carts and carriages, stone work, coal, oil, and gas. Business owners and workers lived nearby amid a changing ethnic and racial mix.

Agricultural Hall (circled above), built in 1856 at the intersection of Catherine, Fourth, and Detroit, is the second-oldest surviving commercial building in Ann Arbor. During the Civil War the building housed

the agricultural implement store and factory of Moses Rogers. The Soldiers' Aid Society for Civil War Relief and other local groups met in the large third-floor hall.

When the photo above was taken in 1879, John Finnegan lived upstairs in Agricultural Hall and sold mowers and reapers there, many of which were made at the Ann Arbor Agricultural Works' large factory just across the river east of Broadway. After 1892 the internationally famous Ypsilanti Jersey Fitting Under-wear

was made here when the building was one of Hay and Todd Manufacturing Company's factories. In 1908 the building became the White Swan Laundry, a name that stuck long after the use had changed.

By the 1920s much of the neighborhood industry was gone. Changes in transportation and power sources had reduced the need for suppliers to be near the railroad, the river, or the center of town.

IN 1890 JOHN BAUMGARDNER SUPPLIED CEMETERY MONUMENTS AND BUILDING AND PAVING STONES FROM HIS SHOP ON THE NORTHEAST CORNER OF DETROIT AND CATHERINE STREETS. HIS STEPFATHER, GERMAN IMMIGRANT ANTON EISELE, OPENED A MARBLE WORKS TO YOUR RIGHT ON THIS SIDE OF THE STREET IN 1868. BEHIND THE WORKS, EISELE BUILT A BRICK HOME THAT STILL STANDS AT 216 CATHERINE.

BY THE TIME OF EISELE'S DEATH IN 1887 THE BUSINESS HAD EXPANDED ACROSS THE STREET TO INCLUDE THE BRICK ITALIANATE BUILDING AND ADDITIONS SEEN BELOW. NOTE THE CARVED STONE LINTELS ON THE BUILDING IN THIS PHOTO AND ON EISELE'S HOUSE. THE BRICK BARN IN THE BACKGROUND STILL STANDS ON THE CORNER OF FIFTH AND CATHERINE WITH AN 1887 DATE IN ITS FRONT GABLE. AMONG THE FIRST IN ANN ARBOR TO USE ELECTRICITY, BAUMGARDNER CHANGED THE FIRM'S NAME TO THE ANN ARBOR ELECTRIC GRANITE WORKS, ACCLAIMED FOR AN "ELECTRIC POLISHING MACHINE THAT GIVES SUCH A HIGH, MIRROR-LIKE FINISH TO HIS WORK."



EISELE'S MARBLE WORKS, 1874, WITH HIS HOME BEYOND



BAUMGARDNER'S BUILDINGS WERE REPLACED IN THE 1930S BY A GAS STATION LATER RUN BY THE ANN ARBOR COOPERATIVE SOCIETY. THE BUILDING WAS CONVERTED TO A RESTAURANT IN 1977.



PHOTOS COURTESY OF THE BENTLEY HISTORICAL LIBRARY