

ann arbor civic theatre presents

Our Town

by thornton wilder

directed by
glenn bugala



march 10-13, 2005
towsley auditorium

th-sat at 8 pm, sun at 2 pm
morris lawrence building
washtenaw comm. college

Act

ANN ARBOR CIVIC THEATRE

FOUNDED  IN 1929

sponsored in part by:



Performed by special arrangement with Samuel French, Inc.

A2ct

ANN ARBOR CIVIC THEATRE

FOUNDED  IN 1929

Board of Directors

Brian Harcourt - *President*
Tiff Crutchfield - *Vice President*
Fred Patterson - *Treasurer*
Linda Borgsdorf - *Secretary*
Anne Bauman
Paul Bianchi
Michael Chu
Ken Faris
Thom Johnson
Catherine Lilly
Kim Perlman
Anthony J. Provenzola
Bob Skon
Ellen Woodman

Advisory Board

Helen Mann Andrews
Robin Barlow
Dennis Block
John Eman
Robert Green
Dave Keren
Ron Miller
Joni Muskovitz
Judy Dow Rumelhart
Ingrid Sheldon
Burnette Staebler
Gayle Steiner
Phyllis Wright
Sheryl Yengera

Suzi Peterson
Managing Director

Cassie Mann
Program Director

Heidi Philipsen
Volunteer Coordinator

322 WEST ANN STREET
ANN ARBOR, MICHIGAN 48104

box office (734) 971-2228
office (734) 971-0605

WWW.A2CT.ORG

Ann Arbor Civic Theatre
Opening night March 10, 2005
Towsley Auditorium

OUR TOWN

A Play By
Thornton Wilder

Directed by
Glenn Bugala

Producer John Reiser	Assistant Director Anthony J. Provenzola	Music Director Glenn Bugala
Costume Designer Nan Wirth	Lighting Designer Nathaniel Madura	Sound Designer Bob Skon
Hair and Makeup Designer Edmund Senkowski	Light Board Operator Warren Nelson	Set Design The Cast
Underscoring Arrangement Glenn Bugala	Spotlight Operator Melissa Elliott	Graphic Designer Glenn Bugala
Stage Manager Anthony J. Provenzola	House Manager Tanya Dabney	Program Layout Sparty Diggler
Towsley House Tech Warren Nelson	Sound Effects Design Glenn Bugala The Cast	Towsley House Tech Scott Wesenberg

This production of *Our Town* features a musical score
entirely composed by Aaron Copland

Performed by special arrangement with Samuel French, Inc.

From the President of A2CT

Welcome to the Ann Arbor Civic Theatre's production of *Our Town*.

As we all sit here awaiting the opening curtain I'd like us all to reflect on our little town. Compared to Grover's Corners, Ann Arbor's quite cosmopolitan. But we share a sense of community like that of a small town. We experience it each time we go to the theatre. As we laugh, cry, or simply breath together with the character's lives unfolding before us, we form a community in its truest sense. We are in communion with the playwright, actors, and each other.

I think this sense of community is why so many large corporations like Pfizer call Ann Arbor home. Based on our connection with the community Pfizer helps fund our efforts. As our membership community grows we find others interested in supporting us, like On Line Technologies and our media partner Michigan Radio. We'd like to count you as a member. Please stop by our membership table in the lobby sometime this evening.

We're glad you're here sharing Thorton Wilder's vision of community. Perhaps tonight we'll all "realize life", if only for a few moments, "while we are living it".

Brian Harcourt, President
Ann Arbor Civic Theatre Board of Directors

The Program

The entire play takes place in Grover's Corners, New Hampshire.

Act One - The Daily Life (1901)

Ten Minute Intermission

Act Two - Love and Marriage (1904)

Ten Minute Intermission

Act Three - Life and Death (1913)

The Cast

(In the order of their appearance)

Stage Manager.....	Thom Johnson
Dr. Gibbs.....	Edmond J. Reynolds
Joe Crowell.....	Corey Garff
Howie Newsome.....	Ted Thrasher
Mrs. Gibbs.....	Kathleen Beardmore
Mrs. Webb.....	Patrice Pedersen
George Gibbs.....	John Boonin
Rebecca Gibbs.....	Sarah Hopp
Wally Webb.....	Oren Steiner
Emily Webb.....	Amanda Akins
Professor Willard.....	Sam Zwetchkenbaum
Mr. Webb.....	Jon Elliott
Woman in the Auditorium.....	Cameron Watkins
Man in the Auditorium.....	Edmund Senkowski
Artistic Woman in the Auditorium.....	Jean Leverich
Simon Stimson.....	Karl Kasischke
Ensemble.....	Erin Rutz
Ensemble.....	Peggy Madden
Ensemble.....	Alison Ramsay
Ensemble.....	Bill Teppo
Ensemble.....	Michael Koeller
Mrs. Soames.....	Anne Bauman
Constable Warren.....	Sam Zwetchkenbaum
Si Crowell.....	Neal Ellsworth
Sam Craig.....	Jeremy Akins
Joe Stoddard.....	George Valenta

People of the Town: Corey Garff, Sarah Hopp, Oren Steiner, Cameron Watkins, Edmund Senkowski, Jean Leverich, Erin Rutz, Peggy Madden, Alison Ramsay, Bill Teppo, Michael Koeller, Neal Ellsworth, Jeremy Akins, George Valenta

The Cast

Amanda Akins (Emily Webb) is thrilled to be performing in her first A2CT production. Past credits include *The Miracle Worker*, *A Midsummer Night's Dream*, *Picasso at the Lapin Agile*, *The House of Blue Leaves*, *The Stonewater Rapture*, and *Elegy for a Lady*, all with the University of Wisconsin – Eau Claire Theatre Department. Amanda teaches in Ann Arbor and looks forward to being involved in more A2CT productions in the future.

Jeremy Akins (Sam Craig, Ensemble) is enjoying his first show with A2CT (and first since high school). He regrets not being able to watch his talented wife from the audience, but this way he can make sure she doesn't run off with George. Don't let Jeremy's performance fool you; he is a left-brained, undramatic computer engineer. He received his MSE from UM in August and currently works for General Dynamics.

Anne Bauman (Mrs. Soames) has loved performing in local community theatre for over twenty years, appearing with Ann Arbor Civic Theatre, UMGASS, Stage Presence, Ltd., and Comic Opera Guild. Over the years she has also worked behind the scenes for all of these groups, particularly in the areas of marketing, board development and fundraising. She is currently completing her most recent stint on A2CT's Board of Directors. Anne also loves performing (with husband, Dick) in the lively song and dance troupe, The Choral Connection, presenting stylized musical revues for various special events around Lower Michigan. Thanks to Glenn and to the entire cast and crew for the beautiful work done in this production of *Our Town*. Break a leg, folks!

Kathleen Beardmore (Mrs. Gibbs) has appeared in a number of A2CT musicals, most recently *On the Town* and *Fiddler on the Roof* (Golde), and one non-musical, *Girls of the Garden Club* (Lilybelle). She would like to thank Glenn, Anthony and the cast for the wonderful experience of rediscovering *Our Town* together. "People are meant to live two-by-two in this world... thank you, Bob, for being my partner on the journey."

John Boonin (George Gibbs) is a junior at Pioneer High school, and is thrilled to be working with this excellent cast. This is his first show with A2CT, but he hopes that it is not his last. For the past few years, he has appeared in several shows with Redbud and has also taken acting classes with that group. John would like to thank the entire cast and crew for making this a positive experience that he will never forget. He would also like to congratulate his little sister Eve in advance for having her Bat Mitzvah this weekend. He knows she'll do great!

Jon Elliott (Mr. Webb) - has been involved in many shows, on and off-stage, most recently directing A2CT's *Inherit The Wind*. I dedicate this performance to my family- Alexis, Melissa and Jennifer- and especially to my parents, Bette and John Elliott, who not only are THE models for marriage, parenthood and citizenship, but are genuinely the nicest people I have ever known.

Neal Ellsworth (Si Crowell, Ensemble) Neal is a sophomore at Saline High School. He enjoys acting, biking, painting miniature models, and hiking. This is Neal's second play with A2CT, the first being *Rebel Without A Cause*. His other interests include baseball, rock climbing, and watching movies.

Corey Garff (Joe Crowell, Ensemble), 11, is excited to be in his first A2CT production. Since he was 6 years old Corey has been involved in several musicals and Operas with Young Peoples Theater, The Young Actors Guild, and Michigan Opera Theater. Some of these include *Joseph and the Amazing Technicolor Dreamcoat* (Dan), *The Wiz* (Munchkin, Flying Monkey), and *Falstaff and Anoush* (an Armenian opera) with MOT. Besides theater, Corey also enjoys playing percussion, volleyball and running cross-country.

Sarah Hopp (Rebecca Gibbs, Ensemble) has only been with A2CT for one season, but has already fallen in love with it. At only 13 years old she has worked in numerous plays and musicals. Some of these include *Fiddler on the Roof* as Chava for her school, *Inherit the Wind* as Melinda with A2CT, Dr. Smith in *The Emperors New Clothes* with A2CT's junior theatre, and as a pickpocket in *Oliver*. In her spare time she enjoys gnawing on bread and sleeping. I would like to thank Glenn and Anthony for helping me with my "reading the rehearsal schedule" issues and my mom for driving me to all (most) of the rehearsals and for always helping me when I need her most. Hi to Olgies, Emmies, Maggies, and Eddy for also being there for me while working on *Our Town*!

Thom Johnson (Stage Manager). TJ has been preparing for this part for over 25 years. He started as a stage manager in college as the stage manager for the "Spanish Play" put on by the Spanish Department in Spanish. He has also been the stage manager for many A2CT productions including *City of Angels*, *The Nerd*, *Blithe Spirit*, *Cabaret*, *The Scarlet Pimpernel*, and many others. Special thanks to a Perfect World for saving my face, Dusty and Saffron for general maintenance, Hacksaw for dialect help and to Flo from Canton for everything else.

Karl Kasischke (Simon Stimson) last appeared on the Towsley stage as Tom in A2CT's *Dinner with Friends*. He has also performed in *Seussical! the Musical*, *The Scarlet Pimpernel*, *Harvey*, *1776*, *Oliver!* and the world premiere of *The Legend of Sleepy Hollow*. He wishes to thank Glenn and Anthony for the opportunity to join this talented cast and for all their hard work. Karl spends his days providing customer service and support for shoppers at CharityUSA.com. Special thanks go to Christy for encouraging him to audition and for putting up with his research for this role.

Michael Koeller (Ensemble) makes a triumphant (?) return to the theatre following a "brief" absence (*Life with Father*, Ypsilanti Players, 1975). The reason: impulse. He resides north of Dexter in almost voluntary semi-retirement. His interests include history and the dogged pursuit of fitness goals.

Jean Leverich (Artistic Woman in the Auditorium, Ensemble) shares an alma mater with Editor Webb (and Wilder's friend, newspaperman Alexander Woolcott). Jean first saw *Our Town* when she was too young to understand much (in a HS production her father directed), and was surprised as an adult to find echoes of Stein, Joyce, and Pirandello in Wilder's deceptively simple modernist play. After a long hiatus from theater, Jean is pleased to participate in her second A2CT show. When not counseling students at UM, she sings alto in the UMS Choral Union.

Peggy Madden (Ensemble) is a newcomer to the Ann Arbor area, and thrilled to be a part of the *Our Town* production. This is her first attempt at acting since playing Booze in her high school's production of *Tune In To Murder*. A recent graduate of Ohio State, she works as an Electrical Engineer for the Eaton Truck Division in Southfield. As part of a training program for work, she passed her Commercial Driver's test, which means she is now licensed to drive the big rigs! Last July, Peggy married her high school sweetheart, Andy, and loves being a newlywed. When not spending time with her husband or at work, Peggy enjoys watching football, playing trumpet, sewing, and singing along with the radio.

Patrice Pedersen (Mrs. Webb) *Our Town* is Patrice's first A2CT production and she is delighted to play a part in this great American work. Past college and Community Theater credits include *Tartuffe*, *You're a Good Man, Charlie Brown*, *Oliver*, and *Oklahoma*. Her professional stage credits include roles in Menotti's *Amahl and the Night Visitors* and Mozart's *Magic Flute*. She taught at Blue Lake Fine Arts Camp from 1987-99 in the voice and choral music department and currently teaches music in the Saline Area Schools. She wishes to thank her family for their support and encouragement to rekindle her love for acting.

Indulge!



322 South Main Street



La Dolce Vita

322 South Main Street



341 South Main Street

PALIO

347 South Main Street

Gratzi

326 South Main Street

Pick your dining pleasure downtown Ann Arbor!

Reservations for all of our restaurants: 888-456-DINE

www.msventures.com

Alison Ramsay (Ensemble) This is Alison's first production with A2CT, and her first theatrical production since high school. She is thrilled to be included in the cast for *Our Town*, and looks forward to working with A2CT in the future.

Edmond J. Reynolds (Dr. Gibbs) is thrilled to be making his A2CT debut reprising the role he played in Miss Coscarely's 11th grade acting class. In his youth, Ed appeared in summer stock at Tibbits Opera House in Coldwater, Michigan. Recent local work includes: *Forum* (Miles Gloriosus), *Annie* (FDR), *West Side Story* (Krupke), and *Music Man* (Quartet). Ed is a board member with the Saline Area Players, and having worked with several local groups, encourages you to support them all. Enjoy your stay in Grover's Corners and welcome!

Erin Rutz (Ensemble) Erin is a recent graduate of Concordia University - Ann Arbor where she studied Biology and theatre. Her most recent role was that of the Fortune Teller in Concordia's production of Thornton Wilder's Pulitzer Prize winning *The Skin of Our Teeth*. This is Erin's first show with the Ann Arbor Civic theatre and has found the experience most rewarding.

Edmund Senkowski (Man in the Auditorium, Ensemble). This is Edmund's first show with Ann Arbor Civic Theatre. He has performed in many show with the Community theatre of Howell, and Spotlight Players. Among his favorite shows are *Fiddler on the Roof* and *The King and I*. Edmund is glad to be apart of such a great cast.

Oren Steiner (Wally Webb, Ensemble) Oren is excited to make his Ann Arbor Civic Theater debut in *Our Town*. Oren is 8 years old and in the 3rd grade at the Hebrew Day School of Ann Arbor. He moved to Ann Arbor two years ago after growing up in Israel since the age of one. Oren has performed in several school plays. His hobbies include sports, acting, magic, and fiber arts. Oren would like to thank his parents for their love and support, and his sister Shira for encouraging him to audition.

Bill Teppo (Ensemble) was last seen in A2CT's production of *On the Town*. While in *On the Town*, he found out that his brother and his brother's wife were expecting their second child. The baby was born in late September. His name is Sam. Bill would like to dedicate this performance to his nephew, Sam.

Ted Thrasher (Howie Newsome) is making his debut in the A2CT as Howie Newsome. He has been studying music and theater for the past year. He has been involved in many productions throughout his Chelsea High School career. Including *Bye, Bye Birdie* and *Joseph and the Amazing Technicolor Dreamcoat*, as the Pharaoh. Ted works as a traveling guitar technician for talented musicians and is now taking time to pursue his dreams. Ted is having a great time learning from the rest of the cast and enjoying every minute of it. Special thanks to Mom and Dad for supporting me and to Glen and Anthony for the opportunity to be in this timeless production.

George Valenta (Joe Stoddard, Ensemble) is frequently seen with The Comic Opera Guild - most recently as Master Toymaker in *Babes in Toyland* - one of five shows he did in the Victor Herbert Festival. He has starred in over 200 half-hour TV shows Yoga for Today seen regularly on Channel 17. He teaches Hatha Yoga at Washtenaw College in the Performing Arts Department and at The Studio in Ypsilanti. He deals in Fine Arts and Antiques appraisals and liquidations.

Cameron Watkins (Woman in the Auditorium, Ensemble) is very pleased to be making her A2CT debut in the cast of *Our Town*. Some of her past credits include *Just Like Us*, *Footloose*, *Oliver*, *The Minotaur*, and *Joseph and The Amazing Technicolor Dreamcoat* with other organizations. Cameron loves to perform and is planning on becoming a professional actress. Right now Cameron is in the eleventh grade at Pioneer High School. She wants to thank her parents and friends for their ongoing support.

Sam Zwetckhenbaum (Professor Willard, Constable Warren, Ensemble) is happy to be part of another A2CT production as it is a great opportunity to enjoy friends, both old and new. He is a native New Englander and has fond memories of hiking in the White Mountains and Mt. Monadnock, and eating ice cream afterwards at a general store not far from Grover's Corners. Sam directs the Hospital Dentistry program at University of Michigan. Joey... thanks for everything you gave us. We all miss you very much.

A2ct

ANN ARBOR CIVIC THEATRE

FOUNDED  IN 1929

Acknowledgements

Our sincerest gratitude to the individuals and organizations that helped make this event possible:

Tiff Crutchfield

Michele Leshan

Peggy Madden

Erin Rutz

Curt Waugh

Catherine Zudak

Laura Bird (Concordia University)

for the use of the umbrellas


Lori Roome for rehearsal space at WCC

and continued help with the run

Suzi Peterson and Cassie Mann

for their production support

Anyone who volunteered their time to help make this show a success!



Always a
wonderful performance

**EDWARD
SUROVELL
REALTORS**

surovellrealtors.com

800.445.5197

Ann Arbor • Adrian • Chelsea • Irish Hills
Jackson • Monroe • Saline • Tecumseh • Ypsilanti

The Production Staff

Glenn Bugala (Director) has been involved with A2CT for 8 years now, acting, producing and directing. For A2CT, he directed *The 75th Anniversary A2CT Gala*, *Tommy*, *Midsummer Night's Dream*, *Front Page* and *A Little Night Music*. Regionally, he has directed *Victor/Victoria* (for WCC), *Little by Little* (for Adjective Arts), and five productions for Gabriel Richard High School. As an actor, he has been seen in A2CT's *On the Town*, *Chicago*, *Evita*, *Chorus Line*, *Taming of the Shrew*, *Merchant of Venice* and *Bliethe Spirit*, among others. Regionally he has been seen in Performance Network's *The Lights* and Ben Cohen's *Lay Your Comfort Down*. Glenn recently completed a term on the A2CT Board of Directors. Prior to coming to Ann Arbor, Glenn enjoyed a professional acting career in Chicago. He received an MFA in Performance from Purdue University and a BA in Theatre from U of M—Flint. By day, Glenn is a Marketing Communications Director, and he also enjoys singing and playing in Ann Arbor Vineyard Church's band. He sends his love to his lovely wife Emily and his wonderful daughter Sophie.

Melissa Elliott (Spotlight Operator) is happy to work on her third show with A2CT, having crewed on *Enter Laughing* and *Inherit The Wind*. She is a Pioneer High School junior who is active in Theatre Guild and is planning on majoring in Technical Theater at college. Credits include *Les Miserables*, *Beauty and The Beast* and *Guys And Dolls*, among others.

Nathaniel Madura (Lighting Designer) This is the second season that Nathaniel has done lighting design for Ann Arbor Civic Theatre. He has worked on 2 productions for A2CT; *On the Town* and *Dinner with Friends*. Additionally, he has worked on three junior theatre productions, *The Emperor's New Clothes*, *The Odyssey*, and *The Pied Piper*. During the day, Nathaniel is an Engineer in Research with the University of Michigan Transportation Research Institute, and has a Bachelors Degree in Mechanical Engineering from Virginia Tech.

Anthony J. Provenzola (Assistant Director, Stage Manager) is happy to be involved in another A2CT production. He previously appeared in *Evita* (Che), *The Pajama Game* (Vernon Hines), *Tommy* (Man 4), *Jekyll and Hyde* (Jekyll/Hyde), *Chicago* (Amos Hart) and the fund raiser concert *Two and a Half Tenors*. Anthony would like to thank his family, friends, co-workers and the audience for their support of community theatre. He would especially like to thank his wife, January, and son, Nicolas, for bringing so much joy, excitement and entertainment to his life.

John Reiser (Producer) Onstage, John has appeared in *Hello Dolly*, *Oliver*, *Guys and Dolls*, *Tommy* and *Evita*, but has given up the footlights for the much easier role of producer. He has also produced *Jekyll and Hyde*, *Chicago* and *Joseph and the Amazing Tech-*

nicolor Dreamcoat. He congratulates Glenn and Anthony for assembling such a talented cast and bringing Thornton Wilder's classic play to the A2CT stage in fine fashion.

Edmund Senkowski (Hair and Makeup) Edmund is glad to be able to help out with Hair and Makeup. Edmund has worked with other theatre's with hair and makeup and is glad to help out with this show. Edmund would like to thank everyone at KSA Beauty Academy for all their help.

Bob Skon (Sound Designer) Bob has been involved with A2CT for three seasons. He's been behind the scenes designing and running sound for *Tommy*, *Pajama Game*, *Smile*, *Chicago*, *Fiddler on the Roof* and *Joseph and the Amazing Technicolor Dreamcoat*. He has been on stage as an ensemble member in *Evita* and *On the Town*, and played John Utterson in *Jekyll and Hyde*. Bob is also a member of the A2CT Board of Directors. By day he is the chief engineer at Michigan Radio.

Nan Wirth (Costume Designer) is pleased to have been asked to work on the A2CT production of *Our Town*. Nan has 40 years of sewing experience and began costume design several years ago as a hobby. She has costumed several plays for local middle and high schools, including *The Wizard of Oz*, *Once on this Island*, *A Midsummer-Night's Dream*, and *The Winter's Tale*. She thanks her family for their patience for the times when their home is temporarily converted into a costume shop.

BRAVO!

from your
good friends @

paesano's
Restaurant & Wine Bar

3411 Washtenaw Ave.
Ann Arbor • 971-0484
www.paesanosannarbor.com



Supporting the
Community
from the Heart of
Ann Arbor



DOBSON-MCOMBER AGENCY, INC.

Insurance and Risk Management

(734) 741-0044

*Insuring You • Your Home
Your Business • Your Car*

Born and raised in Ann Arbor.

The true local bank.

Downtown Ann Arbor • (734) 662-1600

Downtown Ypsilanti • (734) 485-9400

Stadium & Liberty • (734) 822-1900

Traver Village Shopping Center • (734) 662-3800

Washtenaw Avenue • (734) 822-1500

www.bankofannarbor.com



Member FDIC

Bank
OF ANN ARBOR

Membership Form 2004-05

The Ann Arbor Civic Theatre (A2CT) is a nonprofit community theatre that provides the citizens of Ann Arbor and the surrounding region with opportunities to participate in all aspects of theatre: performance, production, and appreciation.

As has always been true, revenue from ticket sales alone cannot cover the entire costs of operating our community theatre. We hope that you will join us as a supporter of this vibrant and venerable institution. In addition to providing support to keep A2CT fiscally sound, membership offers you:

- ★ a discount on Season Tickets
- ★ our "Spotlight" newsletter
- ★ a listing on lobby signage for gifts of \$500+
- ★ a listing in all of our show programs

Sponsor Level	\$50+	<input type="checkbox"/>
Star Level	\$100+	<input type="checkbox"/>
Director Level	\$250 +	<input type="checkbox"/>
Benefactor Level	\$500+	<input type="checkbox"/>
Angel Level	\$1000+	<input type="checkbox"/>

Name: _____

Address: _____

City: _____ State: _____ Zip: _____

Phone: _____

Email: _____

We accept Visa, Mastercard and Discover

_____ exp _____

2004 - 2005 A2CT Season Sponsors

This performance and all of our current season's programs would not be possible without the support of the following people:

Benefactors - \$500 +

Betsy and Robin Barlow
Linda and Charles Borgsdorf
Don and Pam Devine
Robert Green
David and Mary Keren
Fred and Margaret Patterson

Directors - \$250+

David and Sandra Anderson
Anne and Richard Bauman
Charles A. Carver
Michael Chu
Brian and Amy Harcourt
Steve Horne
Fred B. Kahle
Marc Rosenber
Catherine Thoburn

Stars - \$100+

Mary J. Adamski
Marian and Charles Allmand
Helen Mann Andrews
Harlene and Henry Appelman
Leslie Austin and Brad Vincent
Drs. Marjorie and James Barnes
Harry and Betty Benford
Fran, Mark and Cara Berg
Paul and Susie Berneis
Suzanne and Fred Beutler
Paul M. Bianchi
Jean W. Campbell
Ann B. Cassidy
Brandon C. Cave
Francyn and Don Chomic and Family
Kathryn Clark
Dan and Muriel Converse
Tiff Crutchfield
Jim and Lois Dowling
Allan and Cecelia Dreyfuss
Barbara and Peter Eberbach
Judge and Mrs. S. J. Elden
Carol and John Eman
Helen C. Emmons
Margaret and Howard Fox
Clement and Margo Gill
Sue and C. E. Gingles
Verna Goss
Rodney Grambeau
Susan and Hayden Harris
Jan and Dave Hartmann
Debbie and Norman Herbert
Pam, Steve, Jenny and Emily Horne
Jane and David Hughes
David and Phyllis Husted
Michael and Cynthia Irwin
Thom Johnson
Ed and Martha Kimball
Leopold and Christine Klausner
Mr. and Mrs. Richard Koester
Seymour and Dorine Kroll
Catherine Lilly
Mary Louise Lowther

Deborah and Michael Mahoney
Cassie Mann and Tom Steppe
Ann and Jim Mattson
Geroge A. Miller
Patricia Morita
Joan Muskovitz
Kim and Larry Perlman
Patricia J. Pooley
David and Stephanie Pyne
David and Jamie Renken
Edmond J. Reynolds
Barb and Kelly Rigney
John and Marilyn Rintamaki
Amy and Charles Roehrig
Harold "Hal" Rothbart
Alan and Rosemary Rothe
Larry Rusinsky
Mary Ann Sellers
Cliff and Ingrid Sheldon
John and Roma Siller
Robert and Elaine Sims
Gene and Darlene Smith
Eva and Ed Solomon
Burnette Staebler
Chris Starkey and Ernie Terry
Matthew Stewart and Suzi Peterson
Marilyn Tsao and Steve Gao
Robert C. Urbanic
Richard and Laura Van House
Bruce T. Wallace
Erin Webster
Barb Wells
Ellen Woodman
David A. Wright
Sheryl and Shekar Yengera
Sam Zwetckhenbaum

Sponsors - \$50+

Carolyn King and John Alexander
Jacqueline and Robert Anderson
Audrey W., Sophie B. and Nicolas P.
Laurie Atwood
Linda Lee Austin
William and Patricia Austin
Gerald Avrin
Kathleen Bainbridge
Claudia Bantel
Dennis and Carol Becker
Richard and Elissa Benedek
Mark Bernstein and Sharon Brevoort
Cheryl Berteel
Wilber C. Bigelow
David J. Boes
Trina Borenstein
Glenn and Emily Bugala
Frances Bull
Joyce L. Casale
Jack Cederquist
Alice Chambers
Merle and Mary Ann Crawford
Lyn Davidge
Shirley A. Donnelly
ELCO Properties, LLC

Melissa, Jennifer, Alexis and Jon Elliott
Elizabeth Ellis
Helen Emmons
Dave and Michael Feiertag
Rich Fortner
Amelia and Mary Franceschi
Terrence and Anna Gambino
Margaret Gaugler
Doris and Leslie George
Mr. and Mrs. Eugene Glysson
Debra Golden
Eileen and Laura Goldman
Cozette Grabb
William A. Gracie MD
Rose and John Henderson
Robert and Elizabeth Herbst
Janet Woods Hoobler
Barry, Wendy, Sheri and Elizabeth Jaffe
Lynn Jameson
Bob and Ruth Kerschbaum
James and Barbara Krick
John and Margaret Laird
Dale Larson
William and Judith Lynn
Carla Milarch
Carmen and Jack Miller
Martha Montoye
Greg Morris
Mary and Amir Mostaghim
Ruth E. Munzel
Suzanne Northway
Gig Olsen
Elizabeth Payne
Randall and Janet Peacock
Pearlman Family
Emily and Matthew Phenix
Robert Pichler
John Reiser
Jim and Jackie Ritchie
Dave Rowe
Samuel and Irene Rupert
Walter Scott
Wendy and Mike Sielaff
Bob Skon
Elizabeth Soden
Martha Soper
Chris and Sue Szymanski
Karen and Mike Szymanski
Emily Twanmo and Tom Stockton
Jeff and Betsy Warren
Esther Warzynski
Carol W. Weber
Mary A. Weir
Tracey Wentz and Chuck Blackmer
Carrie and Matthew Wickert
John T. Williams
Wolfe Family
O'Bryan B. Worley
Phyllis Wright
Patricia Wulp
Catherine Zudak and Robert Silbergleit

We apologize for any errors or omissions. Please contact A2CT for corrections.

ANN ARBOR COMMERCE BANK

Established 1990

Proud to Support the Community We Serve!


Full Service Community Bank



at the corner of State & Eisenhower

DEPOSIT
Services

BUSINESS BANKING  *plus*

Private BANKING
 *PLUS*

MORTGAGE
 *PLUS*

PV PRIMEVEST
FINANCIAL SERVICES

2950 State Street South ■ Ann Arbor ■ MI 48104 ■ 734.887.3100 ■ www.annarborcommerce.com

Member
FDIC

*Securities and insurance products provided by PRIMEVEST: Not FDIC insured - May lose value - No financial institution guarantee.
PrimeVest Financial Services, Inc. is an independent, registered broker/dealer. Member SIPC/NASD

 EQUAL
HOUSING
LENDER



ARBOR BREWING
COMPANY®

PUB & EATERY

A²CT Season 2005-06

West Side Story September 15-18, 2005 at Lydia Mendelssohn Theatre

Based on a Conception of Jerome Robbins

Book by Arthur Laurentis

Music by Leonard Bernstein

Lyrics by Stephen Sondheim

Directed by Wendy Sielaff

Shakespeare's star-crossed lovers hit the mean streets of New York in this groundbreaking modern musical based on Romeo & Juliet

All My Sons November 10-13, 2005 at Towsley Auditorium

By Arthur Miller

Directed by Jeff Meyers

A2CT pays tribute to the genius of Arthur Miller in his powerful drama of politics and family

Guys & Dolls January 12-15, 2006 at Lydia Mendelssohn Theatre

Book by Jo Swerling and Abe Burrows

Music and Lyrics by Frank Loesser

Directed by Bryan Buckner

Tough-guy gambler Nathan Detroit meets his match in beautiful missionary Sarah in this classic American musical

A Thousand Clowns March 2-5, 2006 at Towsley Auditorium

By Herb Gardner

Directed by Thom Johnson

A free-spirited writer tries to balance uncle-hood, romance, and responsibility in this wacky comedy

The Nerd April 6-9, 2006 at Towsley Auditorium

By Larry Shue

Directed by Andy Ballnik

If you've ever had a guest you just couldn't get rid of, you'll root for hapless hero in this side-splitting slapstick comedy

The Best Little Whorehouse in Texas June 8-11, 2006 at Lydia Mendelssohn Theatre

Book by Larry L. King and Peter Masterson

Music and Lyrics by Carol Hall

Directed by Chris O'Brien

Lovable ladies and randy cowboys mix it up with the mass media in this rollicking musical comedy

**Your Friendly
Neighborhood Place!!**

Paula's Place

Now Available

Pre-made "Ready to Go" Sandwiches

Featuring the "Muffuletta"

With Ham, Salami, Mozzarella, Provolone & Special Olive Spread

Our sandwiches are available on a Croissant, Special Roll, Paesano, Baguette or Bagel.

2111 Packard

(Between Hollywood Video & Marcos Pizza)

734-761-7000

Hours: Mon. - Sat. 6:00am - 10pm



Double Rainbow
Super Premium Ice Cream
"Only Location In Michigan"

- Authentic New York Custard Ice Cream
- Dexter Bakery Donuts and Muffins
- Elaine's Bagels and more...

Season Sponsors

We extend our sincere appreciation to our sponsors, without whom our season would not be possible. We encourage you to support these community-minded organizations.

Online Technologies Corporation

Pfizer

Michigan Radio

Washtenaw Community College



BRAVO!

from your
good friends @

paesano's
Restaurant & Wine Bar

3411 Washtenaw Ave.
Ann Arbor • 971-0484
www.paesanosannarbor.com



Aut BAR

**Ann Arbor's
Premier Thespian Bar**

OPEN SEVEN DAYS
4:00 pm – 2:00 am
SUNDAY BRUNCH
10:00 am – 3:00 pm

315 Braun Ct. • Ann Arbor, MI
734-994-3677
www.autbar.com • autbar@aol.com

ARBOR SPRINGS
WATER COMPANY

Quality Bottled Water Since 1926

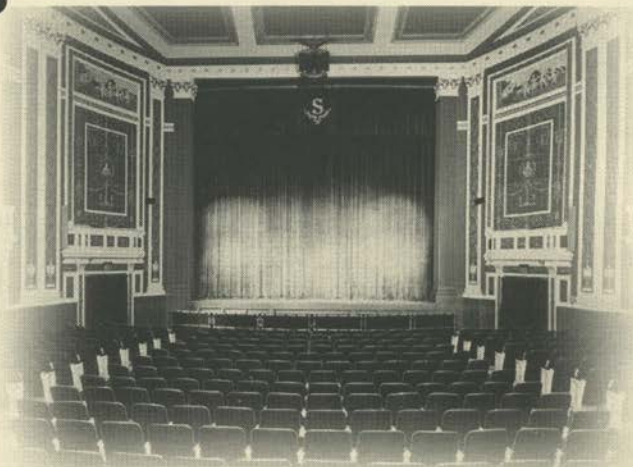


Natural Spring Water

Distilled Water

Hot & Cold Coolers
for home • office • factory

1440 Plymouth Rd. • Ann Arbor
(enter from Jones Drive)
CALL FOR DELIVERY
734-668-8270



(Ambiance and atmosphere included in ticket price)

2004 - 05 SEASON

MAIN STAGE

Tommy (musical)

Sept. 10-Oct. 3, 2004

Tickets \$16 & \$18

Death of a Salesman (drama)

Nov. 5-21, 2004

Tickets \$14 & \$16

PiPPin (musical)

Jan. 21 - Feb 13, 2005

Tickets \$16 & \$18

Run for Your Wife (comedy)

Apr. 1-17, 2005

Tickets \$14 & \$16

Seussical (musical)

May 27 - June 19, 2005

Tickets \$16 & \$18

YOUTH THEATRE

Mr. Scrooge (musical)

Dec. 9-12, 2004, Tickets \$6 youth & \$9 adults
Thu & Fri at 7 pm, Sat at 11 am & 3 pm, Sun at 1 pm

2nd Stage

A Man of No Importance (musical)

Oct. 15 - 24, 2004

Angels in America... (drama)

Feb. 25 - March 6, 2005

The Gravity of Honey (drama)

Apr. 29 - May 8, 2005

All 2nd Stage Tickets, \$12

All Main Stage and 2nd Stage shows begin
at 8 pm, Sundays at 2 pm.

SPECIAL EVENTS at the Baldwin

PIPPIN THEME PARTY NIGHT

Stagecrafters' own MARDI GRAS

Wed., Jan. 19, 2005 at 7 pm

* Themed pre-glow * Silent Auction

* Final Dress Rehearsal of the musical *Pippin*

Tickets \$30 ea

415 S. Lafayette Ave.
Royal Oak MI 48067
www.stagecrafters.org



248.541.6430

All Seats Reserved

Visa and MasterCard Accepted

Announcing Ann Arbor Civic Theatre's
2004-05 Season

THE A2CT **World Tour**

A season that takes you around the world and across the centuries!

On the Town

Directed by Emily Perryman

"New York, New York! It's a helluva town!" Bernstein's musical comes to the Civic stage for the first time.

September 16-19, 2004

at the Lydia Mendelssohn Theatre

Inherit the Wind

Directed by Jon Elliott

Pay a visit to Hillsboro, Tennessee for the trial of the century.

November 11-14, 2004

at Towsley Auditorium

Joseph and the Amazing Technicolor Dreamcoat

Directed by Wendy Sielaff

Civic takes you to ancient Egypt with the exciting music of Andrew Lloyd Webber.

January 6-9, 2005

at the Lydia Mendelssohn Theatre

Our Town

Directed by Glenn Bugala

Grover's Corners, NH, 1901-13. Life happens in the simplest of places.

March 10-13, 2005

at Towsley Auditorium

Lysistrata

Directed by Catherine Zudak

Visit ancient Athens for a hilarious "battle" of the sexes!

April 14-17, 2005

at Towsley Auditorium

Cabaret

Directed by Chris O'Brien

The Berlin of the 1930's serves as a backdrop for this provocative Kander & Ebb musical.

June 9-12, 2005

at Lydia Mendelssohn Theatre

Further information at
www.a2ct.org or 734/971-2228