

# ROVER PIPELINE PROJECT

## PROPOSED 42" O.D. MARKET SEGMENT - NG PIPELINE

### WASHTENAW COUNTY, MICHIGAN



PROJECT NO. 5850000000		ROVER PIPELINE PROJECT 42" MARKET SEGMENT - NG PIPELINE COVER SHEET WASHTENAW COUNTY, MICHIGAN	
PERIOD Dwg. No. MK-P0-01_WA		DATE 11/11/11	
SHEET 1 OF 1		DATE 11/11/11	
DRAWN BY [Signature]		CHECKED BY [Signature]	
APPROVED BY [Signature]		DATE [Date]	
CONTRACT NO. [Contract No.]		PROJECT NO. [Project No.]	
CONTRACT DESCRIPTION [Contract Description]		PROJECT DESCRIPTION [Project Description]	
CONTRACT VALUE [Contract Value]		PROJECT VALUE [Project Value]	
CONTRACT START DATE [Contract Start Date]		PROJECT START DATE [Project Start Date]	
CONTRACT END DATE [Contract End Date]		PROJECT END DATE [Project End Date]	
CONTRACT STATUS [Contract Status]		PROJECT STATUS [Project Status]	
CONTRACT OWNER [Contract Owner]		PROJECT OWNER [Project Owner]	
CONTRACT ADDRESS [Contract Address]		PROJECT ADDRESS [Project Address]	
CONTRACT PHONE [Contract Phone]		PROJECT PHONE [Project Phone]	
CONTRACT FAX [Contract Fax]		PROJECT FAX [Project Fax]	
CONTRACT EMAIL [Contract Email]		PROJECT EMAIL [Project Email]	
CONTRACT WEBSITE [Contract Website]		PROJECT WEBSITE [Project Website]	
CONTRACT CONTACT [Contract Contact]		PROJECT CONTACT [Project Contact]	
CONTRACT CONTACT TITLE [Contract Contact Title]		PROJECT CONTACT TITLE [Project Contact Title]	
CONTRACT CONTACT PHONE [Contract Contact Phone]		PROJECT CONTACT PHONE [Project Contact Phone]	
CONTRACT CONTACT FAX [Contract Contact Fax]		PROJECT CONTACT FAX [Project Contact Fax]	
CONTRACT CONTACT EMAIL [Contract Contact Email]		PROJECT CONTACT EMAIL [Project Contact Email]	
CONTRACT CONTACT WEBSITE [Contract Contact Website]		PROJECT CONTACT WEBSITE [Project Contact Website]	
CONTRACT CONTACT ADDRESS [Contract Contact Address]		PROJECT CONTACT ADDRESS [Project Contact Address]	
CONTRACT CONTACT CITY [Contract Contact City]		PROJECT CONTACT CITY [Project Contact City]	
CONTRACT CONTACT STATE [Contract Contact State]		PROJECT CONTACT STATE [Project Contact State]	
CONTRACT CONTACT ZIP [Contract Contact Zip]		PROJECT CONTACT ZIP [Project Contact Zip]	
CONTRACT CONTACT COUNTRY [Contract Contact Country]		PROJECT CONTACT COUNTRY [Project Contact Country]	



www.alliancepro.com  
713.862.0022



www.alliancepro.com  
713.862.0022





OWNERSHIP TRACT NO.	CEC FILE NO.	STATIONING	REMARKS
2980115	CEC FILE 20220000	29801.15	29801.15 BIR DITCH
2980128	CEC FILE 20220000	29801.28	29801.28 BIR DITCH
2980133	CEC FILE 20220000	29801.33	29801.33 BIR DITCH
2980146	CEC FILE 20220000	29801.46	29801.46 P.L. & 30'W.M. RL
2980148	CEC FILE 20220000	29801.48	29801.48 P.L. & 18'Z.M. RL
2980149	CEC FILE 20220000	29801.49	29801.49 BIR DITCH
2980150	CEC FILE 20220000	29801.50	29801.50 BIR DITCH
2980151	CEC FILE 20220000	29801.51	29801.51 BIR DITCH
2980152	CEC FILE 20220000	29801.52	29801.52 BIR DITCH
2980153	CEC FILE 20220000	29801.53	29801.53 BIR DITCH
2980154	CEC FILE 20220000	29801.54	29801.54 BIR DITCH
2980155	CEC FILE 20220000	29801.55	29801.55 BIR DITCH
2980156	CEC FILE 20220000	29801.56	29801.56 BIR DITCH
2980157	CEC FILE 20220000	29801.57	29801.57 BIR DITCH
2980158	CEC FILE 20220000	29801.58	29801.58 BIR DITCH
2980159	CEC FILE 20220000	29801.59	29801.59 BIR DITCH
2980160	CEC FILE 20220000	29801.60	29801.60 BIR DITCH
2980161	CEC FILE 20220000	29801.61	29801.61 BIR DITCH
2980162	CEC FILE 20220000	29801.62	29801.62 BIR DITCH
2980163	CEC FILE 20220000	29801.63	29801.63 BIR DITCH
2980164	CEC FILE 20220000	29801.64	29801.64 BIR DITCH
2980165	CEC FILE 20220000	29801.65	29801.65 BIR DITCH
2980166	CEC FILE 20220000	29801.66	29801.66 BIR DITCH
2980167	CEC FILE 20220000	29801.67	29801.67 BIR DITCH
2980168	CEC FILE 20220000	29801.68	29801.68 BIR DITCH
2980169	CEC FILE 20220000	29801.69	29801.69 BIR DITCH
2980170	CEC FILE 20220000	29801.70	29801.70 BIR DITCH
2980171	CEC FILE 20220000	29801.71	29801.71 BIR DITCH
2980172	CEC FILE 20220000	29801.72	29801.72 BIR DITCH
2980173	CEC FILE 20220000	29801.73	29801.73 BIR DITCH
2980174	CEC FILE 20220000	29801.74	29801.74 BIR DITCH
2980175	CEC FILE 20220000	29801.75	29801.75 BIR DITCH
2980176	CEC FILE 20220000	29801.76	29801.76 BIR DITCH
2980177	CEC FILE 20220000	29801.77	29801.77 BIR DITCH
2980178	CEC FILE 20220000	29801.78	29801.78 BIR DITCH
2980179	CEC FILE 20220000	29801.79	29801.79 BIR DITCH
2980180	CEC FILE 20220000	29801.80	29801.80 BIR DITCH
2980181	CEC FILE 20220000	29801.81	29801.81 BIR DITCH
2980182	CEC FILE 20220000	29801.82	29801.82 BIR DITCH
2980183	CEC FILE 20220000	29801.83	29801.83 BIR DITCH
2980184	CEC FILE 20220000	29801.84	29801.84 BIR DITCH
2980185	CEC FILE 20220000	29801.85	29801.85 BIR DITCH
2980186	CEC FILE 20220000	29801.86	29801.86 BIR DITCH
2980187	CEC FILE 20220000	29801.87	29801.87 BIR DITCH
2980188	CEC FILE 20220000	29801.88	29801.88 BIR DITCH
2980189	CEC FILE 20220000	29801.89	29801.89 BIR DITCH
2980190	CEC FILE 20220000	29801.90	29801.90 BIR DITCH
2980191	CEC FILE 20220000	29801.91	29801.91 BIR DITCH
2980192	CEC FILE 20220000	29801.92	29801.92 BIR DITCH
2980193	CEC FILE 20220000	29801.93	29801.93 BIR DITCH
2980194	CEC FILE 20220000	29801.94	29801.94 BIR DITCH
2980195	CEC FILE 20220000	29801.95	29801.95 BIR DITCH
2980196	CEC FILE 20220000	29801.96	29801.96 BIR DITCH
2980197	CEC FILE 20220000	29801.97	29801.97 BIR DITCH
2980198	CEC FILE 20220000	29801.98	29801.98 BIR DITCH
2980199	CEC FILE 20220000	29801.99	29801.99 BIR DITCH
2980200	CEC FILE 20220000	29802.00	29802.00 BIR DITCH



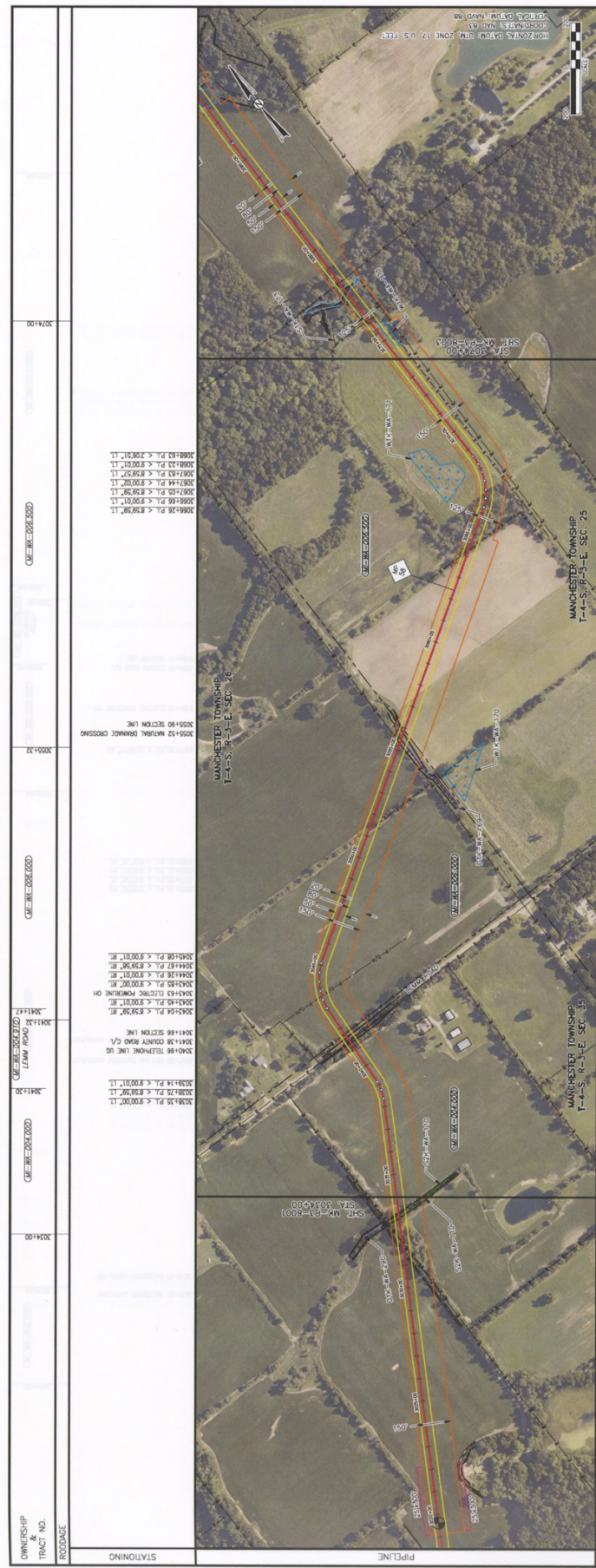
CLASS LOCATION/DESIGN FACTOR  
 MAC02/INDRO. TEST PRESS. (P.S.I.)



NO.	MATERIAL SUMMARY DESCRIPTION	QUANTITY	CONSTRUCTION METHOD
1	PIPE DETAIL		OPEN CUT
2	PIPE DETAIL		OPEN CUT
3	PIPE DETAIL		OPEN CUT
4	PIPE DETAIL		OPEN CUT
5	PIPE DETAIL		OPEN CUT
6	PIPE DETAIL		OPEN CUT
7	PIPE DETAIL		OPEN CUT
8	PIPE DETAIL		OPEN CUT
9	PIPE DETAIL		OPEN CUT
10	PIPE DETAIL		OPEN CUT
11	PIPE DETAIL		OPEN CUT
12	PIPE DETAIL		OPEN CUT
13	PIPE DETAIL		OPEN CUT
14	PIPE DETAIL		OPEN CUT
15	PIPE DETAIL		OPEN CUT
16	PIPE DETAIL		OPEN CUT
17	PIPE DETAIL		OPEN CUT
18	PIPE DETAIL		OPEN CUT
19	PIPE DETAIL		OPEN CUT
20	PIPE DETAIL		OPEN CUT
21	PIPE DETAIL		OPEN CUT
22	PIPE DETAIL		OPEN CUT
23	PIPE DETAIL		OPEN CUT
24	PIPE DETAIL		OPEN CUT
25	PIPE DETAIL		OPEN CUT
26	PIPE DETAIL		OPEN CUT
27	PIPE DETAIL		OPEN CUT
28	PIPE DETAIL		OPEN CUT
29	PIPE DETAIL		OPEN CUT
30	PIPE DETAIL		OPEN CUT
31	PIPE DETAIL		OPEN CUT
32	PIPE DETAIL		OPEN CUT
33	PIPE DETAIL		OPEN CUT
34	PIPE DETAIL		OPEN CUT
35	PIPE DETAIL		OPEN CUT
36	PIPE DETAIL		OPEN CUT
37	PIPE DETAIL		OPEN CUT
38	PIPE DETAIL		OPEN CUT
39	PIPE DETAIL		OPEN CUT
40	PIPE DETAIL		OPEN CUT
41	PIPE DETAIL		OPEN CUT
42	PIPE DETAIL		OPEN CUT
43	PIPE DETAIL		OPEN CUT
44	PIPE DETAIL		OPEN CUT
45	PIPE DETAIL		OPEN CUT
46	PIPE DETAIL		OPEN CUT
47	PIPE DETAIL		OPEN CUT
48	PIPE DETAIL		OPEN CUT
49	PIPE DETAIL		OPEN CUT
50	PIPE DETAIL		OPEN CUT

<b>BOVER PIPELINE PROJECT</b> <b>42" WASHPIPE SECTION TO STA. 30344+00</b> <b>STA. 29801+15 TO MP 57.5</b> <b>LENAWEE &amp; WASHENAW, MICHIGAN</b>		PROJECT NO. <b>185000000005</b>
PREVIOUS SHEET NO. <b>185000000004</b>		SHEET 1 OF 1 <b>185000000005</b>
		PLAN NO. <b>185000000005</b>
CHECKED BY <b>JR</b>	DATE <b>11/17/14</b>	APPROVED BY <b>JR</b>
DESIGNER <b>JR</b>	DATE <b>11/17/14</b>	DATE <b>11/17/14</b>
DRAWN <b>NLM</b>	DATE <b>11/17/14</b>	DATE <b>11/17/14</b>
CONSTRUCTION <b>NLM</b>	DATE <b>11/17/14</b>	DATE <b>11/17/14</b>
CADD <b>NLM</b>	DATE <b>11/17/14</b>	DATE <b>11/17/14</b>
SCALE: 1" = 200'		

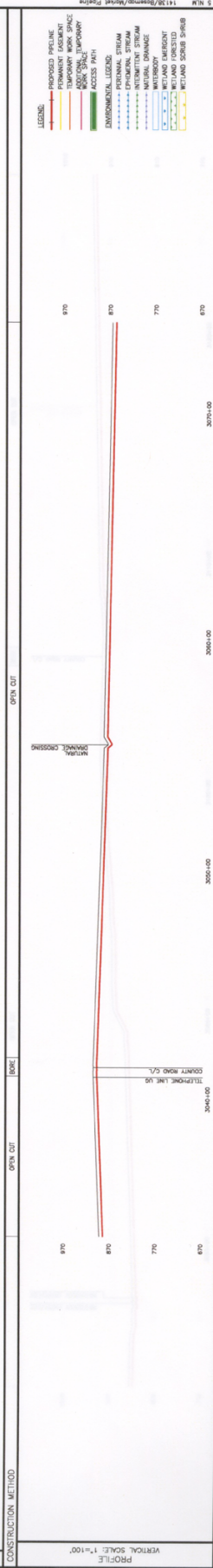




CLASS LOCATION/DESIGN FACTOR  
 M.A.G.P./INTROD. TEST PRESS. (P.S.I.C.)  
 1 / 072  
 140 096 / 118

PIPE DETAIL

CONSTRUCTION METHOD	PIPE	OPEN CUT	OPEN CUT	OPEN CUT



NO.	MATERIAL, QUANTITY, DESCRIPTION	QUANTITY	REVISION - DESCRIPTION	DATE	DATE		APPROVED	DATE	BY	DATE	CONSTRUCTOR USE	PROJECT NO.	5850000000
					A	FER. TING							

ROVER PIPELINE PROJECT  
 42" MARKET SEGMENT - NG PIPELINE  
 STA. 3034+00 TO STA. 3074+00  
 MP 57.5 TO MP 58.2  
 WASHINGTON, MICHIGAN

PERIOD DUE NO.  
 PERIOD DUE NO.  
 SHEET 1 OF 1  
 MK-P3-8002  
 DATE: 11/14/14

VERTICAL SCALE: 1"=100'  
 PROFILE SCALE: 1"=100'



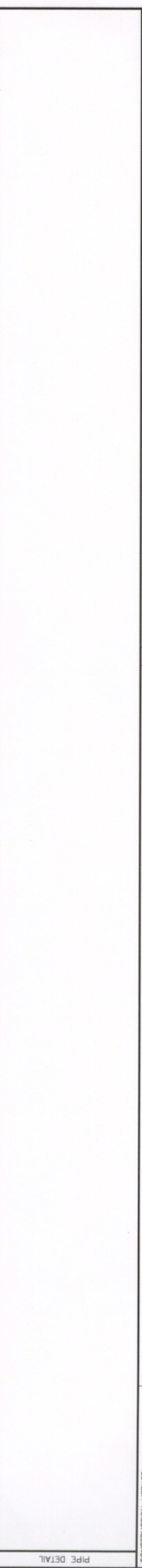
OWNERSHIP & TRACT NO. 3074+00 3078+21 3082+00 3086+00 3090+00 3094+00 3098+00 3102+00 3106+00 3110+00 3114+00 3118+00 3122+00

STATIONING  
 3074+00 3078+21 3082+00 3086+00 3090+00 3094+00 3098+00 3102+00 3106+00 3110+00 3114+00 3118+00 3122+00

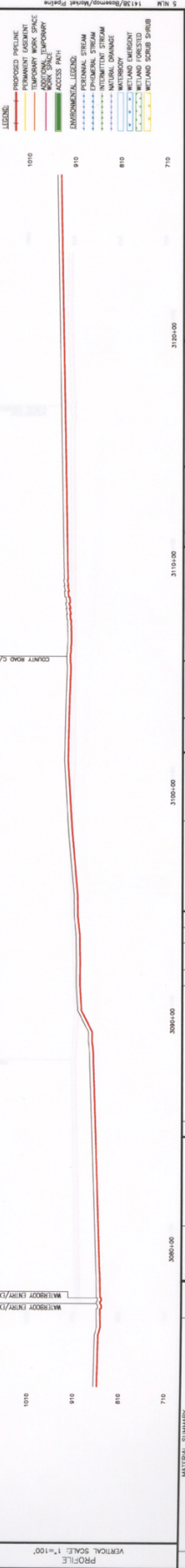
CE-WE-3082-000  
 CE-WE-3086-000  
 CE-WE-3090-000  
 CE-WE-3094-000  
 CE-WE-3098-000  
 CE-WE-3102-000  
 CE-WE-3106-000  
 CE-WE-3110-000  
 CE-WE-3114-000  
 CE-WE-3118-000  
 CE-WE-3122-000



CLASS LOCATION/DESIGN FACTOR  
 MA.O.P./IMPRO. TEST PRESS. (P.S.I.C.)  
 1 / 0.72  
 140 PSIG / 110.0



CONSTRUCTION METHOD  
 OPEN CUT



NO.	MATERIAL	QUANTITY	UNITS	DESCRIPTION
	5'-1' DIA. P.W. 4" MIN. LINE VALVE	1	EA	CONSTRUCTION
	WATERBOOD ENDRY/CHK	1	EA	CONSTRUCTION

NO.	DATE	DESCRIPTION

NO.	DATE	DESCRIPTION

PROJECT NO. 58000000005  
 PERIOD ONE NO.  
 DATE 1 OF 1  
 MK-P3-8003  
 SHEET 1 OF 1



ROVER PIPELINE PROJECT  
 42" MARKET SEGMENT - NG PIPELINE  
 STA. 3074+00 TO STA. 3127+00  
 MP 38.2 TO MP 56.2  
 WASHINGTON, MICHIGAN

NO.	DATE	DESCRIPTION

NO.	DATE	DESCRIPTION

NO.	DATE	DESCRIPTION

NO.	DATE	DESCRIPTION

NO.	DATE	DESCRIPTION

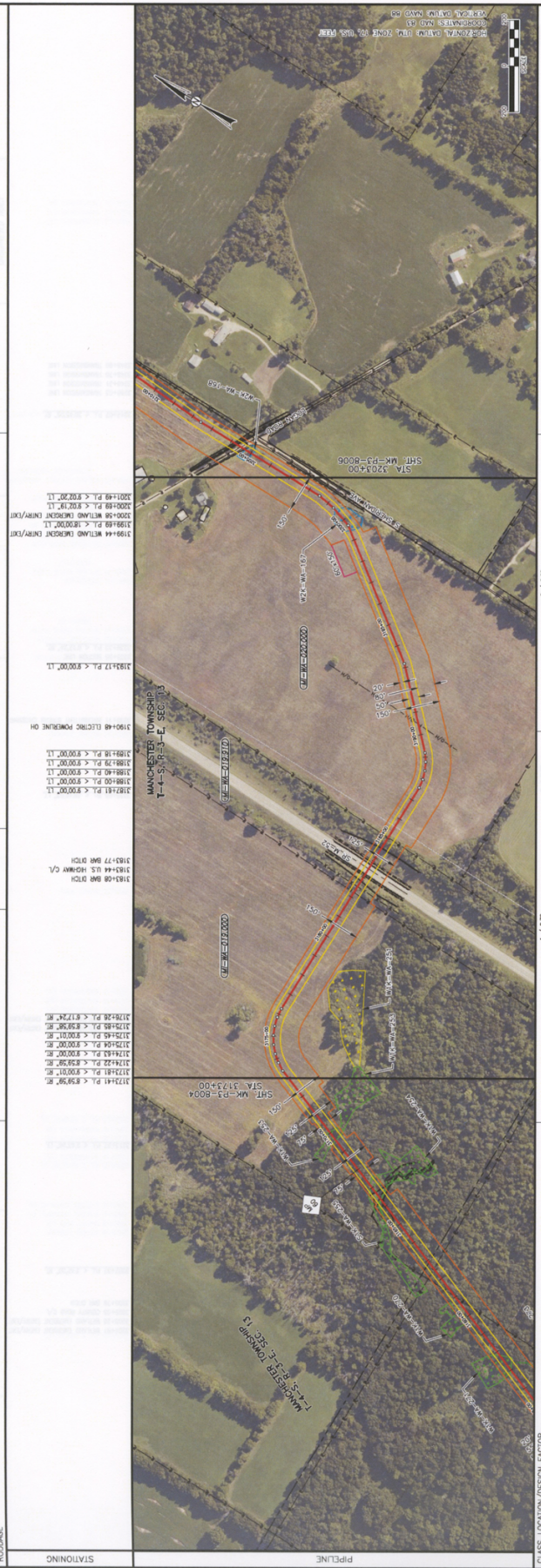






OWNERSHIP & TRACT NO. ROADWAY

STATIONING	CE/M/E-001/000	CE/M/E-002/000	CE/M/E-003/000	CE/M/E-004/000	CE/M/E-005/000
1723+00	1724+00	1725+00	1726+00	1727+00	1728+00



CLASS. LOCATION/DESIGN FACTOR  
M.A.O.P./M.O.R.D. TEST PRESS (P.S.I.G.)



LEGEND

- PROPOSED PIPELINE
- PERMANENT EASEMENT
- TEMPORARY WORK SPACE
- EXISTING ACCESS DRIVE
- EXISTING STREAM
- EXISTING EPHRAIMAL STREAM
- EXISTING NATURAL DRAINAGE
- WATERBODY
- WETLAND FORESTED
- WETLAND SCIRM SCRUB

PROJECT NO: 255000000000  
PERIOD ONE NO: 1  
SHEET 1 OF 1  
DATE: 11/16/14  
FILE NO: MK-P3-B005  
BEST: 1 OF 1

NO.	MATERIAL, QUANTITY, & DESCRIPTION	QUANTITY	CONSTRUCTION METHOD	REFERENCE DRAWING TITLE	NO.	REVISION - EXPLANATION

ROVER PIPELINE PROJECT  
42" MARKET SEGMENT - NG PIPELINE  
STA. 3173+00 TO STA. 3203+00  
MP 60.1 TO MP 60.7  
WASHINGTON, MICHIGAN

DATE: 11/16/14  
FILE NO: MK-P3-B005  
SHEET 1 OF 1

NO.	STATUS	DATE	BY	APPROVED
1	PRELIM			
2	CONSTR.			
3	CAUSE			





















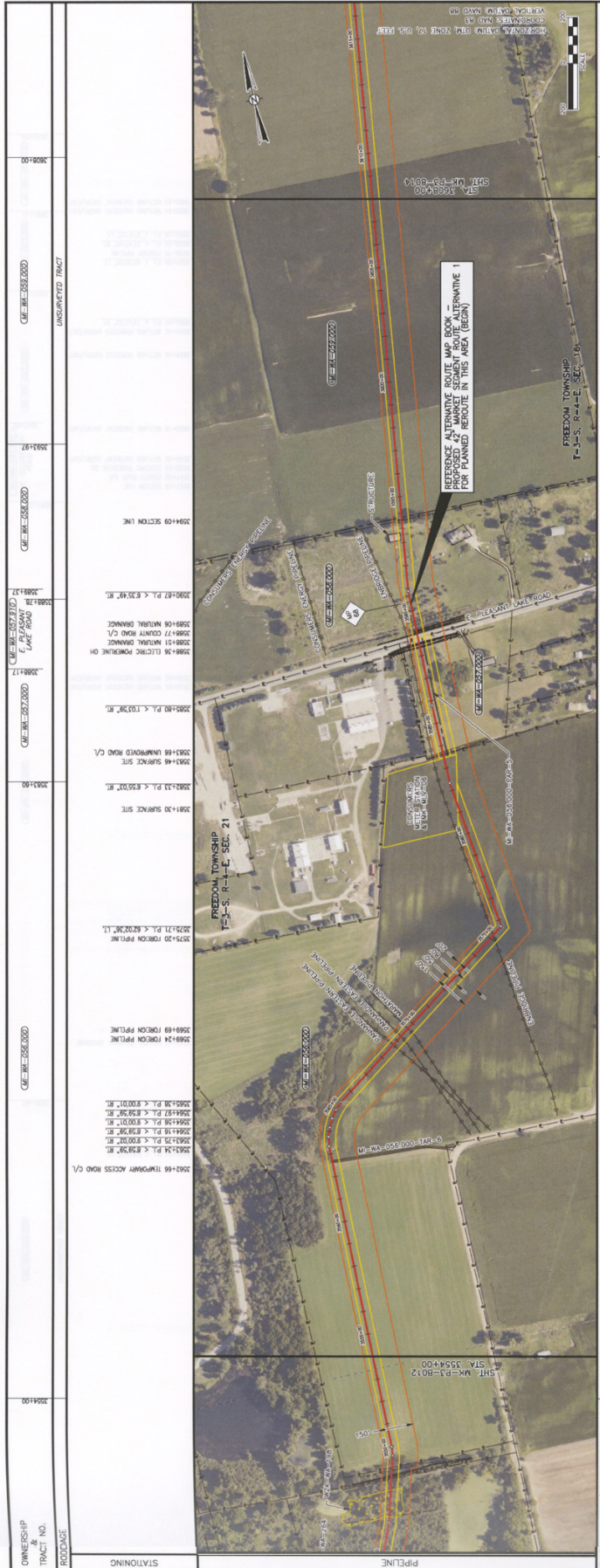












CLASS. LOCATION/DESIGN FACTOR  
 M.A.O.P./HYDRO. TEST PRESS (P.S.I.)  
 1440 P.S.I. / 125



NO.	MATERIAL SUMMARY DESCRIPTION	QUANTITY
PE-00-001	CONSUMERS METER STATION A	
PE-00-002	CONSUMERS METER STATION B	
PE-00-003	CONSUMERS METER STATION C	
PE-00-004	CONSUMERS METER STATION D	
PE-00-005	CONSUMERS METER STATION E	
PE-00-006	CONSUMERS METER STATION F	
PE-00-007	CONSUMERS METER STATION G	
PE-00-008	CONSUMERS METER STATION H	
PE-00-009	CONSUMERS METER STATION I	
PE-00-010	CONSUMERS METER STATION J	
PE-00-011	CONSUMERS METER STATION K	
PE-00-012	CONSUMERS METER STATION L	
PE-00-013	CONSUMERS METER STATION M	
PE-00-014	CONSUMERS METER STATION N	
PE-00-015	CONSUMERS METER STATION O	
PE-00-016	CONSUMERS METER STATION P	
PE-00-017	CONSUMERS METER STATION Q	
PE-00-018	CONSUMERS METER STATION R	
PE-00-019	CONSUMERS METER STATION S	
PE-00-020	CONSUMERS METER STATION T	
PE-00-021	CONSUMERS METER STATION U	
PE-00-022	CONSUMERS METER STATION V	
PE-00-023	CONSUMERS METER STATION W	
PE-00-024	CONSUMERS METER STATION X	
PE-00-025	CONSUMERS METER STATION Y	
PE-00-026	CONSUMERS METER STATION Z	

PROJECT NO. 565000000005  
 PERIODIC DATE NO.  
 SHEET NO. 1 OF 1  
 DATE 11/16/11  
 DRAWN BY J. J. JONES  
 CHECKED BY J. J. JONES  
 APPROVED BY J. J. JONES  
 DATE 11/16/11

ROVER PIPELINE PROJECT  
 42" MARKET SEGMENT - NG PIPELINE  
 STA. 3554+00 TO STA. 3608+00  
 MP 67.3 TO MP 68.3  
 WASHTENAW, MICHIGAN  
 MK-P3-8013  
 SHEET 1 OF 1

ROVER PIPELINE  
 MARKET SEGMENT

FILE NO. 11-1-2007  
 FILE NAME







OWNERSHIP TRACT NO.	3662100	3674187	3688106	3701178	3702180	3716100
RODNOGE	CE-ME-206E-000	CE-ME-206E-000	CE-ME-206E-000	CE-ME-206E-000	CE-ME-206E-000	CE-ME-206E-000
STATIONING						



CLASS: LOCATION/DESIGN FACTOR  
 M.A.O.P. / M.O.R.O. TEST PRESS (P.S.I.G.)  
 1440 PSE / 18.0



CONSTRUCTION METHOD	OPEN CUT
PIPE DETAIL	OPEN CUT
MATERIAL SUMMARY	
NO.	QUANTITY

PROJECT NO: 585000000005  
 PROVIDER FILE NO:  
 SHEET 1 OF 1  
 MK-01-0015  
 SCALE: 1" = 200'

**ROVER PIPELINE PROJECT**  
**42' MARKET SEGMENT - NC PIPELINE**  
 STA. 3662+00 TO STA. 3716+00  
 MP 69.4 TO MP 70.4  
 WASHTENAW, MICHIGAN

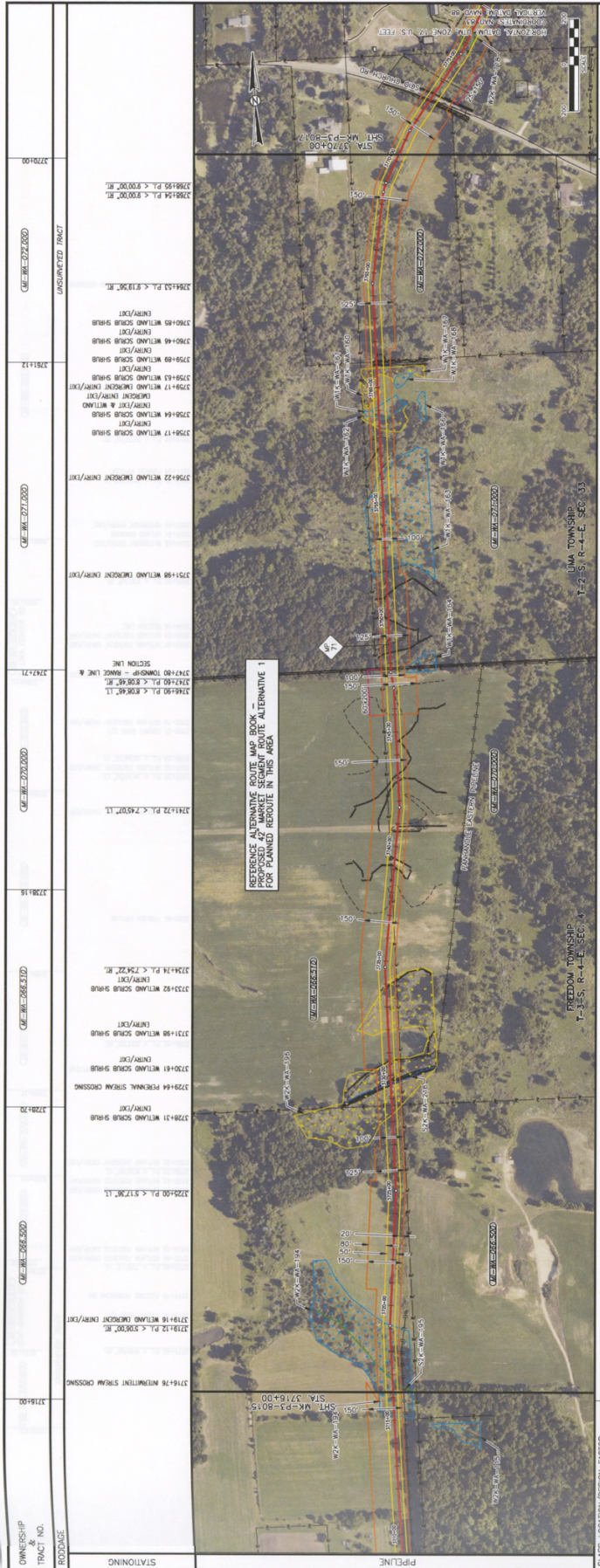
**ROVER PIPELINE**  
 Alternative Route

DATE	BY	DESCRIPTION
11/19/14		PRELIMINARY
11/19/14		CONSTRUCTION

DATE: 11/19/14  
 TIME: 11:59:14  
 FILE NO.:  
 USER: JLR

- LEGEND:
- PROPOSED PIPELINE
  - TEMPORARY WORK SPACE
  - EXISTING PIPELINE
  - ACCESS PATH
- ENVIRONMENTAL LEGEND:
- PERMANENT STREAM
  - INTERMITTENT STREAM
  - WETLAND
  - WETLAND EMERGENT
  - WETLAND SCOUR STRIPS

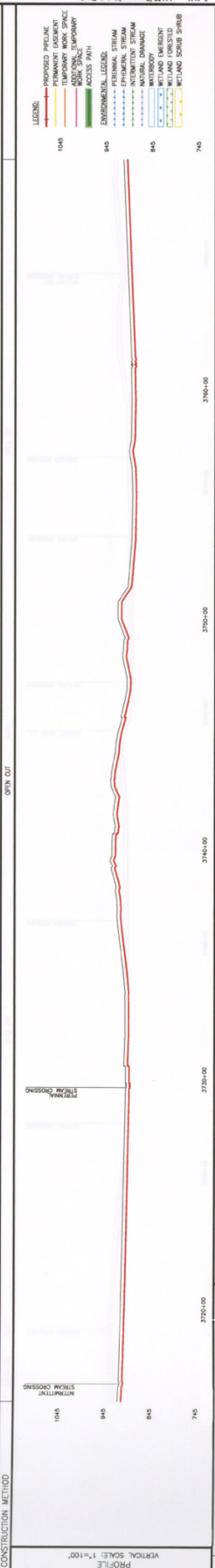




CLASS LOCATION/DESIGN FACTOR  
 M.A.O.P. / HYDRO. TEST PRESS. (P.S.I.C.)  
 144.005 / 110.0

PIPE DETAIL

CONSTRUCTION METHOD	PIPE DETAIL
OPEN CUT	



PROFILE  
 VERTICAL SCALE: 1"=100'

NO.	MATERIAL SUMMARY	DESCRIPTION	QUANTITY

DATE NO.	REFERENCE DRAWING TITLE NO.	REVISION - DESCRIPTION	BY	DATE	CHK'D

DATE	STATUS	BY	DATE	APPROVED	DATE	BY	DATE
	PRELIM						
	BD						
	CONSTR						
	CLOS						

DATE	BY	DATE	DATE

PROJECT NO. 585000000005  
 PROJECT DATE NO.    
 SHEET NO. OF 1  
 MK-P3-016  
 SHEET 1 OF 1

ROVER PIPELINE PROJECT  
 42" MARKET SEGMENT - NG PIPELINE  
 STA. 3716+00 TO STA. 3770+00  
 MP 70.4 TO MP 71.4  
 WASHINGTON, MICHIGAN

ROVER PIPELINE  
 WASHINGTON, MICHIGAN

DATE: 11/17/11  
 TIME: 11:17 AM

DATE: 11/17/11  
 TIME: 11:17 AM

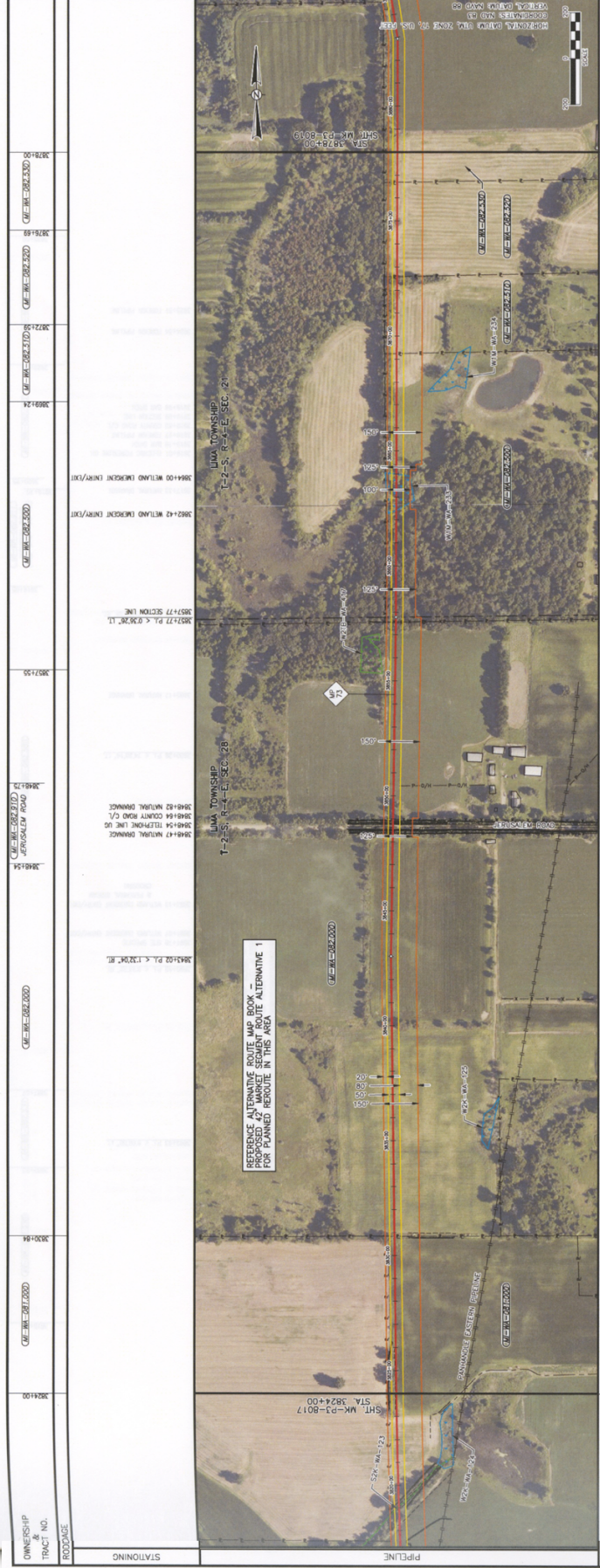
DATE: 11/17/11  
 TIME: 11:17 AM

STATIONING  
 RODDAGE  
 TRACT NO.  
 OWNERSHIP





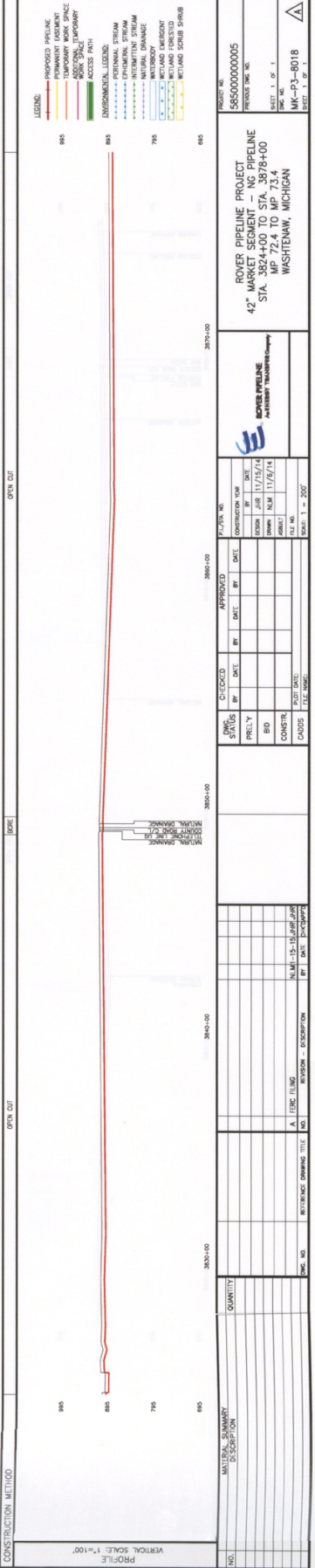




CLASSIFICATION/DESIGN FACTOR  
 M.A.G.P./HARD TEST PRESS (P.S.G.)  
 144.892 / 18.8

PIPE DETAIL

CONSTRUCTION METHOD	PIPE DETAIL	PIPE DETAIL
OPEN CUT	OPEN CUT	OPEN CUT



PROFILE  
 VERTICAL SCALE: 1"=100'

NO.	MATERIAL SUMMARY DESCRIPTION	QUANTITY

PROJECT NO. 58500000005	DATE 11/15/14
PROJECT NAME ROVER PIPELINE PROJECT 42" MARKET SEGMENT - NC PIPELINE STA. 3824+00 TO STA. 3878+00 MP 72.4 TO MP 73.4 WASHTENAW, MICHIGAN	DATE 11/15/14
PROJECT NO. MK-P3-8018	DATE 11/15/14
PROJECT NAME ROVER PIPELINE 42" MARKET SEGMENT - NC PIPELINE	DATE 11/15/14
PROJECT NO. MK-P3-8018	DATE 11/15/14

OWNERSHIP  
 TRACT NO.  
 ROD/DAGE

STATIONING

3876+00 3876+50 3877+00 3877+50 3878+00 3878+50 3879+00 3879+50 3976+00

3861+00 3861+50 3862+00 3862+50 3863+00 3863+50 3864+00 3864+50 3865+00 3865+50 3866+00 3866+50 3867+00 3867+50 3868+00 3868+50 3869+00 3869+50 3870+00 3870+50 3871+00 3871+50 3872+00 3872+50 3873+00 3873+50 3874+00 3874+50 3875+00 3875+50 3876+00 3876+50 3877+00 3877+50 3878+00 3878+50 3879+00 3879+50 3976+00























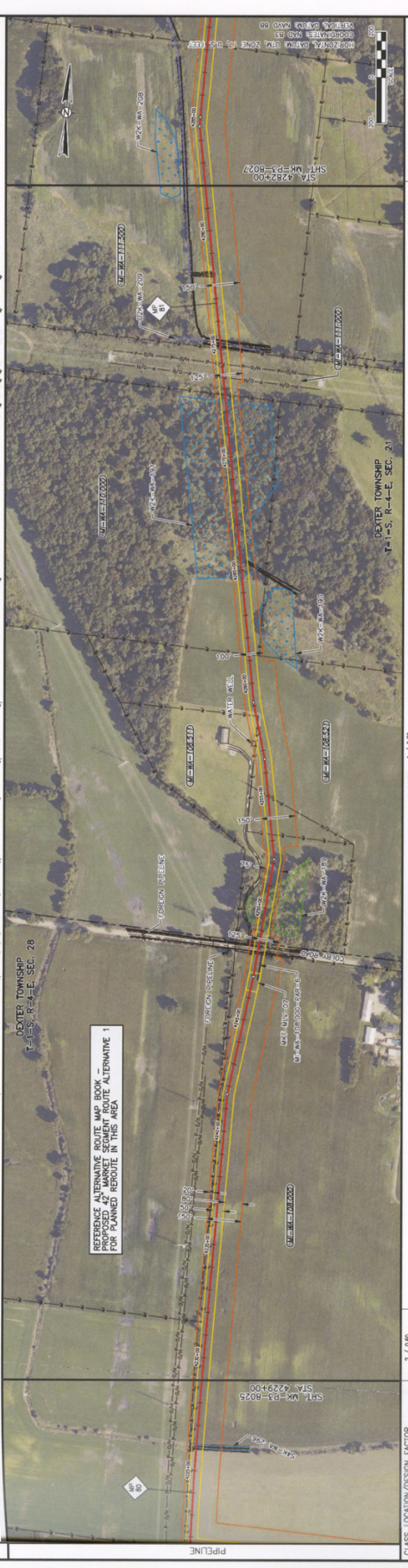








OWNER/SHIP TRACT & NO.	STATIONING	PRODDAGE
429+00	429+00	
428+00	428+00	
427+00	427+00	
426+00	426+00	
425+00	425+00	
424+00	424+00	
423+00	423+00	
422+00	422+00	
421+00	421+00	



CONSTRUCTION METHOD	PIPE	OPEN CUT	OPEN CUT
429+00	429+00	429+00	429+00
428+00	428+00	428+00	428+00
427+00	427+00	427+00	427+00
426+00	426+00	426+00	426+00
425+00	425+00	425+00	425+00
424+00	424+00	424+00	424+00
423+00	423+00	423+00	423+00
422+00	422+00	422+00	422+00
421+00	421+00	421+00	421+00

PROJECT NO: 585000000005  
 SHEET 1 OF 1  
 DATE: 11/7/14  
 DRAWN BY: NLM  
 CHECKED BY: NLM  
 SCALE: 1" = 200'

**ROVER PIPELINE PROJECT**  
**42" MAINTENANCE TO STA 4282+00**  
**STA 4239+00 TO STA 4282+00**  
**MP 80.1 TO MP 81.1**  
**WASHTENAW, MICHIGAN**

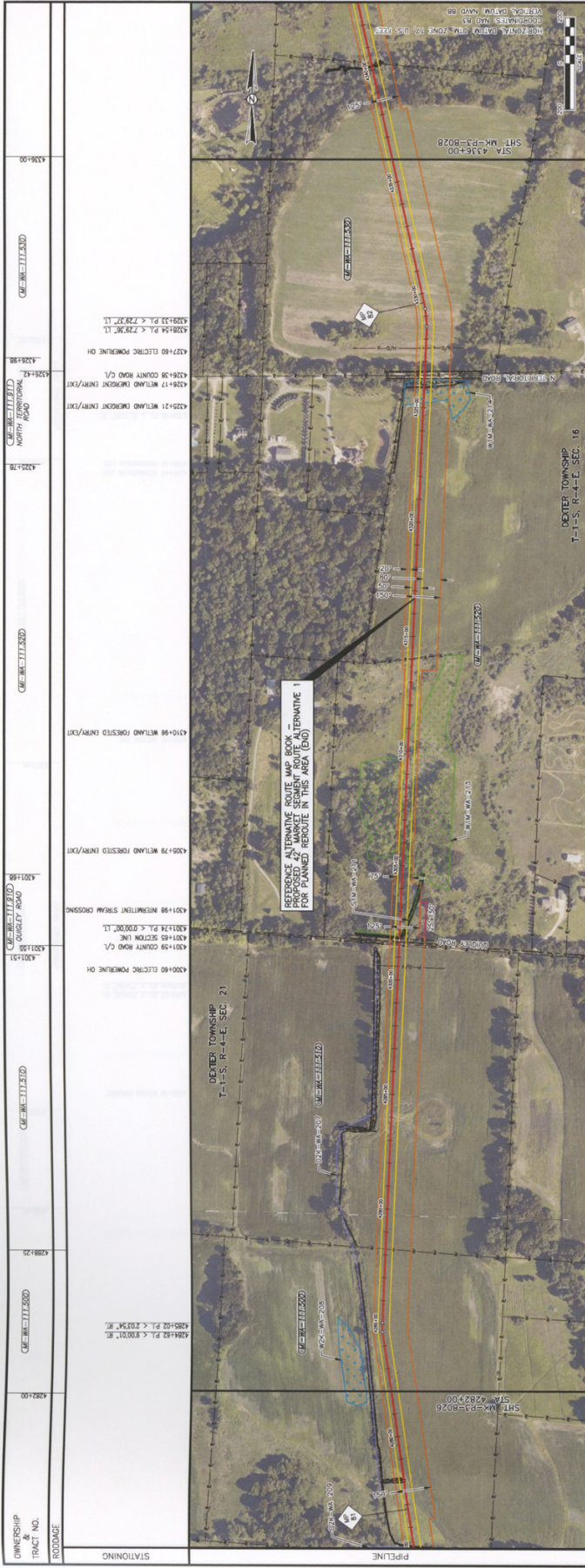
NO.	QUANTITY	DESCRIPTION

MATERIAL SUMMARY

1-108 PUMP 4.0" MAIN LINE VALVE  
 REFERENCE DRAWING TITLE NO. DESCRIPTION

NO.	DATE	BY	DESCRIPTION

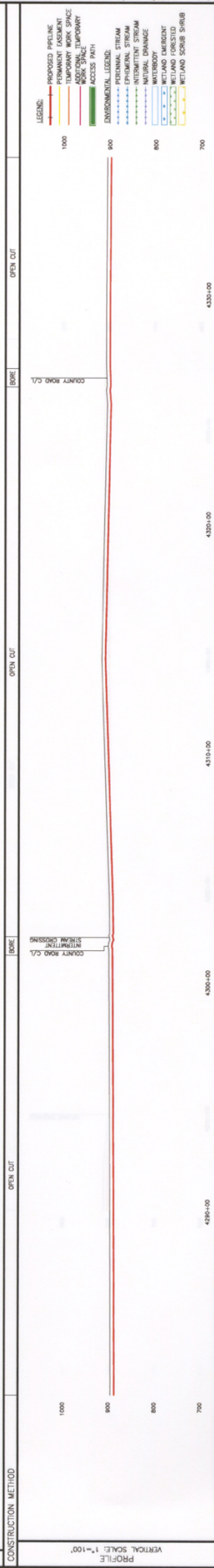




CLASS LOCATION/DESIGN FACTOR  
 M.A.D.P./HYDRO. TEST PRESS. (P-S.L.C.)

PIPE DETAIL

CONSTRUCTION METHOD	DEPTH CUT	DEPTH CUT	DEPTH CUT	DEPTH CUT



**PROPOSED PIPELINE PROJECT**  
 42" MARKET SEGMENT - NG PIPELINE  
 STA. 4282+00 TO STA. 4336+00  
 WASTEWATER, MICHIGAN

PROJECT NO. 5800000005  
 PREVIOUS DATE: 10/11/14  
 SHEET 1 OF 1  
 MK-P-3-8027  
 SHEET 1 OF 1

DATE: JUNE 11/15/14  
 DRAWN: JUNE 11/15/14  
 CHECKED: JUNE 11/15/14  
 DATE: 11/11/14

STATUS	DATE	BY	DATE	BY	DATE	BY
PRELIM						
BO						
CONSTR.						
CAUSE						

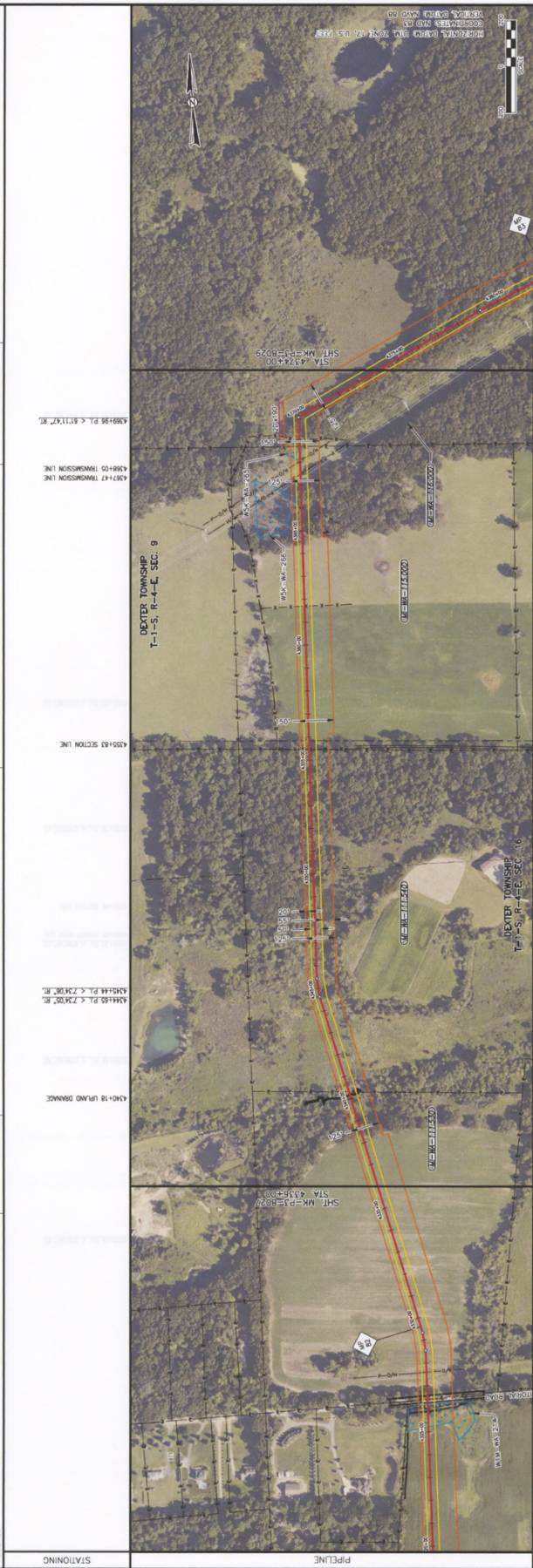
APPROVED

DATE: 11/15/14  
 BY: [Signature]

NO.	MATERIAL QUANTITY DESCRIPTION	QUANTITY	DATE	NO.	REVISIONS - DESCRIPTION



OWNERSHIP & TRACT NO.	4374100	4374150	4374200	4374250	4374300	4374350
RODDAGE	UNACQUIRED TRACT	UNACQUIRED TRACT	UNACQUIRED TRACT	UNACQUIRED TRACT	UNACQUIRED TRACT	UNACQUIRED TRACT
STATIONING	4374100	4374150	4374200	4374250	4374300	4374350
PIPELINE	4374100	4374150	4374200	4374250	4374300	4374350



CLASS LOCATION/DESIGN FACTOR  
M.A.O.P./MROD, TEST PRESS (P.S.I.G.)

1 / 0.72  
1440 RSG / R.S.D.

PIPE DETAIL

CONSTRUCTION METHOD

VERTICAL SCALE: 1"=100'

CONSTRUCTION METHOD

UPLAND DRAINAGE

NO.

MAJOR SUMMARY DESCRIPTION

QUANTITY

DATE	NO.	REVISION	DESCRIPTION

PROJECT NO. 58500000005  
PROJECT TITLE NO. 42" MARKET SEGMENT - NG PIPELINE STA. 4336+00 TO STA. 4374+00  
SHEET 1 OF 1  
DATE MK-P-3-8028  
SHEET 1 OF 1

ROVER PIPELINE PROJECT  
42" MARKET SEGMENT - NG PIPELINE  
STA. 4336+00 TO STA. 4374+00  
WASHTENAW COUNTY  
WASHTENAW, MICHIGAN

ROVER PIPELINE  
AUBURN TOWNSHIP COMPANY

PROJECT NO. 58500000005  
PROJECT TITLE NO. 42" MARKET SEGMENT - NG PIPELINE STA. 4336+00 TO STA. 4374+00  
SHEET 1 OF 1  
DATE MK-P-3-8028  
SHEET 1 OF 1

DATE	BY	DESCRIPTION	DATE	BY	DESCRIPTION

SCALE: 1" = 200'

DATE	BY	DESCRIPTION

FILE NO.

DATE 11/16/14

DATE 11/16/14

FILE NO.

DATE 11/16/14

LEGEND

- PROPOSED PIPELINE
- PERMANENT EASEMENT
- ADJACENT PROPERTY
- PROPOSED TEMPORARY
- ADJACENT TEMPORARY
- ENVIRONMENTAL SENSITIVE
- EPHEMERAL STREAM
- POTENTIAL STREAM
- NATURAL DAMAGE
- MATERIAL
- MATERIAL DAMAGE
- WETLAND FORESTED
- WETLAND SCRUB SPRING











