

Volume 16 No. 7

**argus eyes**

Feb.-March 1959





# Talking About Argus



... with Clint Harris

It gives me real pleasure to write my first article for Argus Eyes. I am looking forward to the opportunity of communicating with everyone at Argus through the medium of regular articles. In addition, I expect to frequently talk directly to as many Argus people as possible. Nevertheless, it would not be feasible to cover the many topics that are of importance to us all in individual, face to face discussions with each of you. I believe that these articles will fill a real need that cannot be met any other way.

I would like to say that I am very happy to be back with the Argus Division. I do not believe that anyone can spend more than twenty years of their working life with a fine organization like Argus without having their work become a major part of their life. After being away for two years, I certainly know that Argus is a very important part of my life. I have really missed the familiar scenes and all my friends at Argus. I am not only glad to be back, but I can sincerely say that my deep attachment to the Argus Division leads me to desire, above all else, that the division shall grow and prosper.

While I missed my Argus associations in the two years that I have been away, I did have many interesting and challenging experiences. I am grateful to have had the opportunity to work with Don Mitchell on Sylvania's new product programs and with Bob Lewis in the operation of the Semiconductor Division. I am equally pleased to have had the opportunity to meet and work with many of the fine

people in other Sylvania divisions. We can all be proud to be a part of a company which has so many capable people who are dedicated to the growth and progress of their divisions and the Company as a whole. We have a real responsibility to live up to the high standards of performance that are set by our associates in Sylvania.

## GREAT DIVERSIFICATION AHEAD

Sylvania has now joined with General Telephone. This merger adds further strength and stability to the Sylvania picture. The new, combined company, called General Telephone and Electronics, will be one of the world's great industrial organizations with tremendous resources — not only in material assets, but in talented men and women as well. It will be able to cover many fields. There will not be many subjects, particularly on the frontiers of modern science and living, that are not of interest to this new company.

Like Sylvania, General Telephone believes in decentralized operations. Sylvania will continue to operate as a separate corporation. The Argus Division will continue to operate as a separate division of Sylvania as it has in the past two years. There will be no change in our basic policies. We will continue our progressive personnel policies and our fundamental dedication to the principle of recognizing each person as an individual and treating everyone with the consideration and dignity due to every human being in a free society.

## ARGUS SUCCESS IS UP TO US

While we are part of an even larger corporation, we must not forget that the future success of the Argus Division finally depends upon ourselves. The philosophy of decentralization which gives us the freedom to conduct our division affairs in the manner which we believe to be best requires that we assume the full responsibility for our future. This is as it should be. No one can understand and

appreciate our problems as well as we can. We must solve our problems and work to build growth and progress. Sylvania can only help us if we first help ourselves.

I am looking forward to discussing, in future articles, the many important problems and decisions that we must face.

## About the Cover

A glint of Spring is in her eye as Jan Marie Wright chooses an Easter plant at a local nursery. She is the daughter of Genevieve in Purchasing and Francis (Joe) Wright in Material Handling and Trucking.

The photographer is Jan Gala, who wins a \$25 Bond for his cover contest entry.

## Argus Men Named to Community Posts

DeWayne Wilson of Maintenance, was recently elected Commander of the Washtenaw County Council of Veterans. He is a member of the Veterans of Foreign Wars.

Tom Spitler, Manager of Industrial Relations, has been elected President of the Ann Arbor Manufacturers' Association. He was previously Vice President of the organization.

Dick Caley, Supervisor of Personnel, will serve as 1959 Chairman of the Red Cross campaign in Whitmore Lake and other county areas where there is no United Fund.

Jim Lodwick, Manufacturing, was named Chairman of the fund raising drive for Junior Achievement in Ann Arbor and Washtenaw County.

## Vacation Schedule

The 1959 vacation shutdown has been scheduled for the weeks of July 20 and July 27. This will correspond with vacation shutdowns at other Company locations.



## ARGUS, MARY LOU, AND TELEVISION

Mary Lou Anderson shows TV audience how easy it is to use the new Argus coupled exposure meter.



TV pictures taken by Wilma Simmons with an Argus "40" Camera.

As Argus educational services consultant, Mary Lou Anderson may find herself on the threshold of a new career -- a television star.

Well, anyway, Mary Lou made her television debut on WXYZ-TV's "House of Charm" program. She must have made a hit, though, because they had her back a second time.

Mary Lou has been demonstrating how easy it is to use Argus products such as our new Match-Matic C3 color slide camera and the coupled exposure meter available on both our C33 and C44 models.

An important part of Mary Lou's job is to educate the public to the fun and rewards that can be anybody's through simplified, modern photography. On television, she told women audiences that they have the wonderful opportunity to use their cameras at home and capture moments on film that the man of the house doesn't often get the chance to. She showed color slides of some of these special moments available to women and also some photographs taken by the Ann Arbor Camera Club.

## Annual Dinner Snapshots

Eighteen charming Argusettes, with Thelma Burke as chairman, served as hostesses at the Annual Employee Dinner held at the Michigan Union Ballroom on January 14. In spite of a severe snow storm, 500 Argus employees attended, while honored guests Don Mitchell and Bob Lewis arrived on time

despite a long bus ride from Cleveland after planes were grounded. Much of the credit for the evening's success goes to Mary Burris, Employee Services Manager, who was in charge of making the arrangements for the delicious dinner and decorating the tables so attractively.



Back row from left to right - Rachel Rodriguez, Inez Lawson, Thelma Burke, Beulah Newman, Lee Kinney, Dorothy Haarer, Mary Lou Anderson, Frances Watterworth, Isabelle Nash, Marian Quackenbush, Kathryn Fraser. Front row - Betty Towell, Jessie Farnsworth, Alice Hale, Evelyn Geiger, Grace Ingram, Beatice Magill, and Mary Burris. (Beth Bennett not shown).



At the Annual Dinner Joe Detweiler presented watches to Twenty-Year Service Employees, E. Robert Isaacson, Erwin H. Braatz and Lewis Belleau.

## Bob Lewis Elected New Sylvania President (Nice guys don't win ball games, but -- )

We Argusites should be pleased and happy to know that Bob Lewis has recently been named President of Sylvania. And all of us who worked with Bob can take added pleasure in knowing that nice guys can win ball games.

To those who didn't enjoy the privilege of knowing and working with Bob, his record as President of Argus speaks for itself. Bob was named President in 1950 when Argus sales were around \$5 million. When he left us in 1958, sales were around \$21 million!

Bob, his wife Alice, and their eight children now live in Darien,



Connecticut. As President of Sylvania, Bob succeeds Don G. Mitchell who will continue as Chairman of the Board of Directors and President of the new General Telephone & Electronics Corporation which has been formed by the merger of Sylvania and General Telephone Corporation.



# DIPLOMAS FOR JOHN AND TED

It takes a lot of doing to squeeze in 8,000 hours of on-the-job training and off-the-job studying, but John Kokinakes and Ted Steinback accomplished that feat to become graduated as Journeymen Machine Repairmen. The Bureau of Apprentices, Department of Labor, has awarded John and Ted diplomas to certify and recognize them as skilled tradesmen.

Over a period of approximately four years, John and Ted have pursued this apprentice training course. Drafting, math, and shop theory were some of the subjects studied and, of the 8,000 hours in the training program, John and Ted spent 672 hours of related training through evening courses at Ann Arbor High School.

Argus can be especially proud of employees like John and Ted, not only because they took the time

and effort to better themselves but also because they were selected on a competitive basis through interviews and special tests.



As Joe Detweiler and the graduate apprentices discuss the diplomas, John's father, Andy Kokinakes of Material Handling and Trucking, beams proudly. Erv Braatz, Foreman of the Maintenance Department, and Jim Fraser, both members of the joint Apprentice Committee, look on approvingly.

# Jim Rohrbaugh Wins Salesmen's Applause



Jim Rohrbaugh, Product Service Manager was honored at the recent Sales Meeting by receipt of The Arlon B. Clarke Memorial Award for 1958. This

award, given in the name of the first Argus salesman is made annually by Argus field salesmen to "that person in the home office whose talents, inspiration and selflessness have made the Argus salesman's lot a happier one."

As manager of the Product Service Department, Jim is responsible for dealer and consumer correspondence as well as servicing photographic products under the Argus lifetime guarantee. He has been with Argus since 1947.

# Five Maintenance Employees Retire



ERNIE BLOMQUIST



HARVEY SWITSER



OLGA HINTZ and OZZIE HOEFT

Maintenance Department lost five of its employees to retirement early this year. They are Harvey Switser, cleaner, Olga Hintz, cleaner, Ozzie Hoeft, maintenance utility man, Ernie Blomquist, cleaning supervisor, and Harry Kaufman, electrician. Department 20 also lost Eva Baker, optical assembler to retirement. We will all miss the cheerful smiles and fine cooperation we have received from these employees.

When asked what their plans for the future were, Harvey said he plans to buy a farm and raise chickens. We wish him much success in his venture. Olga said she was going to visit her many friends and catch up on her card playing which she has so sadly neglected of late. Most of the others replied that they were going to do all of the things they never had time to do when they were working. Argus wishes them all the best for the future.



EVA BAKER RECEIVES GOOD WISHES FROM DICK CALEY.



HARRY KAUFMAN



# DICK CALEY INTERVIEWS ERNST HOFMANN --- SWISS PERSONNEL MANAGER

**Editor's Note:** Ernst Hofmann is Assistant to the Personnel Director of George Fischer, Inc., Schaffhausen, Switzerland, manufacturer of castings and machines, employing 11,000 people in plants throughout Western Europe. Ernst has been sent to the United States by his company for one year of study and observation of our personnel practices. Since last spring he has been a graduate student at the University of Michigan School of Business Administration, and also has worked half days as a personnel trainee at Argus in order to gain practical experience. In addition, Ernst has made detailed study visits to more than 30 U.S. companies of all types. This interview presents some of his observations and comparisons.

**DICK:** Are there any fundamental differences in management-employee relationships in Western Europe and in the United States?

**ERNST:** I was surprised to find an amazing similarity in general economic concepts and in the thinking and feeling of the individuals. The biggest differences are created by our need for more skilled manpower, and our structural shortage of labor — that is, we have more demand for workers than our population in Switzerland can meet.

**DICK:** How do you solve that problem?

**ERNST:** One-third of our hourly paid employees are imported from other countries like Germany, Italy, Austria, Hungary and France. This, of course, creates some language problems, and we have had to train some supervisors to talk Italian. Of course, almost all Swiss know at least one or two languages in addition to the French or German



"We normally work a 46 hour week..."

they speak at home. English is a popular second language which we start to learn in secondary school.

**DICK:** Do you provide social benefits to your employees?

**ERNST:** Yes, and they are similar to yours in such areas as social security, old-age benefits and unemployment compensation. These items amount to 32% of the wages (Ed. Note 22% is U.S. average.)

In addition, our company provides rental housing for roughly 20% of our employees. This is because rent controls in Switzerland have created a serious housing shortage, since few people want to build and rent.

Another major difference is our Individual Welfare Service. Here the company gives financial, legal and family living advice and assist-



"Our Supervisors had to take Italian lessons!"

ance to employees who have troubles.

**DICK:** What are the normal working hours in Switzerland?

**ERNST:** Most industries work a 46 hour week, on a schedule which allows a free Saturday every other week. By custom, everyone goes home at noon for the big meal of the day, so we have a two hour lunch period, but work from 7:30 A.M. to 5:45 P.M. Younger employees would prefer a schedule like yours, but the majority demands the old schedule.

**Editor's Note** - Space does not permit the balance of this interview in this issue. However, it will be continued in the next edition with information on apprentice training, military training problems and other interesting facts. Any questions you would like discussed may be submitted to the Personnel Department.

## *It's in the Book...*

When do I get incentive pay? What's my seniority? How do I find out about job openings? Can I get a leave of absence? How much vacation do I rate?

If you have questions like these, or any others concerning Argus personnel policies, head for the nearest copy of the newly-published Argus Personnel Policy Manual. You will find a copy nearby, as they

have been permanently placed in convenient spots throughout all plants. Chances are you'll also find a quick and clear answer to your question as a result of many hours devoted to this project by Art Parker, Jr. Policy information on every phase of both hourly and salaried operations has been gathered and is presented with a table of contents and section headings to make it easy to find any information you desire without delay. Future policy changes will be reflected in the manuals.





## NEW ARGUS PRODUCTS TO BE INTRODUCED AT NATIONAL PHOTO SHOW



**Argus C33 Complete Color-Slide "System"**

The Argus C33 is a top-quality camera designed to appeal both to beginners and advanced photo fans. This is readily accomplished because the basic camera has many "ease-of-use" features, while the available system of accessories provides the flexibility to handle practically any photographic challenge.

The C33 has a bayonet lens mount for quick interchangeability from the 50mm normal f/3.5 lens to either the 35mm wide angle or the 100mm telephoto. The new Argus Zoom viewfinder provides accurate viewing for all of the lenses.

Flash is synchronized for "M" or "X" and a new folding flash unit will be available.

Exposure setting can be handled by the beginner with single color-matic markings, or the more advanced owner can add the coupled meter for precise settings by just matching the lens to the meter reading.

Other C33 features include single-stroke rapid wind, concealed crank for rapid wind, a new easy loading arrangement and the exposure counter is under glass where it cannot be accidentally moved.

The C33 camera with case will retail for \$99.95, while each accessory lens is \$49.95.

When the Master Photo Dealers' and Finishers' Association trade show opens in Philadelphia on March 22, Argus and Sylvania Photolamps will be there with one of the major exhibits. The Argus display will feature the introduction of three important new products...the C33 colorslide camera...the Match-Matic M3 8mm movie camera...and the M750 movie projector.

Center of interest in the exhibit will be a newly-created "demonstration center". Here, visiting dealers will be able to see all of the new products in operation and learn about the advanced selling features. The M750 projector and the President slide projector will be in continuous operation. The two cameras will be presented and demonstrated by Argus sales representatives.

Dealers will also see the full program of advertising and sales promotion campaigns ready to push Argus sales this spring. Orders will be taken at the show, and a tremendous volume of business is anticipated.

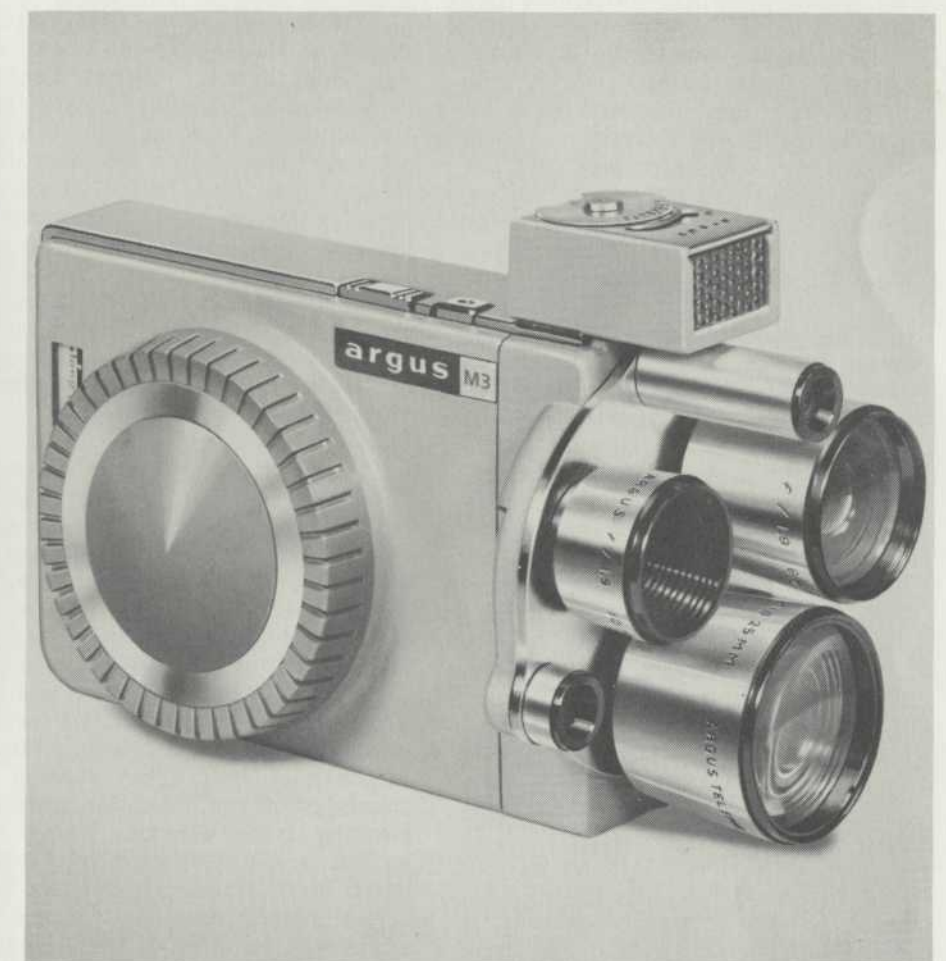


**Argus M750 Showmaster movie projector**

This is the big brother of the M500...actually only slightly larger in size, but with a 50% increase in projection brilliance! The M750 uses the new Sylvania Super Tru-Flector projection lamp with a silvered metal mirror precisely positioned inside the lamp, producing a brilliant beam like a miniature lighthouse.

A major feature of the M750 is the new Argus "Zoom" projection lens which is variable from 15mm to 25mm to provide the exact picture size desired to fill a screen without having to move the projector!

Other new features will include a quiet-operating motor and a film splicer stored inside the cover. All M500 features are also included in the M750 which will retail for \$124.95.



**Argus Match-Matic M3 Movie Camera**

The first Argus movie camera is ready for introduction, and it's a beauty. In the Argus tradition, it has outstanding modern styling, and is a special value because it offers features normally available only in far more expensive models.

The Match-Matic exposure system already proved on the C3 is included for quick and easy settings. The M3 has a three-lens turret with f/1.9 wide angle, telephoto and normal lenses, all included at the \$99.95 retail price.

Instead of the usual single viewfinder with masks or lines for the various lenses, the M3 has a separate optical viewfinder matched to each lens. As the turret is turned, the proper viewfinder automatically comes into position, and the user always sees a large, exact image of the area he will photograph.

Other features include built-in filters for haze and indoor color...single frame operation for special effects...fast ratchet wind...and diecast metal construction.



# Sales Report

# ARGUSITE'S SON AN EXECUTIVE AT 13

#3 in a series of letters from our sales personnel



From:

Jack Pelton  
Field Sales  
Manager

If you are wondering about the popping flash bulbs and curious crowds of men in our plant on February 5, this activity was part of our National Sales Meeting. The men comprise our field selling force plus representatives from our distributors on the West Coast, New York City, Canada and Alaska.

The meeting was designed to present our 1959 merchandising plans and to bring our field salesmen "back home" for reorientation to our immediate goals and sales plans. While attending the meeting, our salesmen had an opportunity to examine each of our new products in detail. Needless to say, these were received with a great deal of enthusiasm. They had an opportunity during the plant tour to take pictures with the new C33, and the results were excellent.



We hope many of you had an opportunity to say "Hello" to our salesmen and become a little better acquainted with them.

Seeing our plant in operation was stimulating to our sales group. Many of the men commented on the great care being taken to provide them with top quality products. Our thanks to all of you for helping to make this portion of our sales meeting a success.

Cordially,

Jack Pelton

Put together a father's guiding hand and business sense with a young son's imagination and enthusiasm, and you have the makings of a young business executive who can show profit in fun, education, and, hopefully even money.

A few years ago, Chris Van den Broek, thirteen-year-old son of Jan Van den Broek, Argus Product Development Engineer, bought from his older brother for \$2.00 a toy printing press of the kind that uses rubber type. Chris fooled around printing novelty cards and gradually became both intrigued with the vision of neatly printed work and aware of the severe limitations of his printing equipment, and he began to think of investing substantial capital (several dollars) in a greater variety of rubber type.

Then dad stepped in and suggested that if Chris was interested enough in printing to invest good money he should invest in equipment with which he could do a professional-looking job, using a standard metal type that would eventually be able to pay for itself by doing useful work. So, together, father and son made plans. They borrowed a small letter press from Walter Root, Argus engineer. They studied its construction and operation and then, starting from scratch, Chris designed a machine that they could build themselves, a machine that would function like their model but that could be built of wood instead of cast iron. With the extreme pressures required in printing, the construction of an effective wooden printing press is an engineering achievement in itself.

Type drawers, each requiring more than 150 small pieces, were built of tempered masonite and glued and fitted together. Finally, in October 1958 the press was finished, tested, and pronounced successful. The "Chriswood Press" was ready to commence operations.

The public library furnished texts on printing, and Chris found out that printing is not only a craft requiring a good deal of learning, but an art requiring good taste and careful judgment in the selection of type face and the arrangement of the printed words. The "Chriswood

Press" now offers a selection of 23 different type faces and sizes as well as all kinds of paper, cards, envelopes and stationery.



CHRIS VAN DEN BROEK AT WORK IN HIS "CHRISWOOD PRESS" BASEMENT OFFICE.

Being a perfectionist, Chris knows no compromise for quality. Neat work is done slowly. Chris can turn out 675 pieces an hour working at his best speed. But, in a business-like way, he says this does not include time out for coffee breaks which consist of soft drinks or ice water.

Since he first went into operation four months ago, Chris has turned out 35 custom-printed jobs including stationery, Christmas cards, business cards, plain white envelopes, and some novelty material. He even printed the family Christmas cards in three colors. Some of his customers have been friends and relatives, while others are local businesses.

His biggest job to date was 1,500 church collection envelopes. Chris has his own printed business cards, order blanks, and invoices.

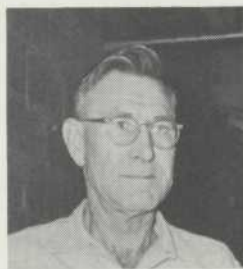
Chris still has about \$50 to recover of his nearly \$200 capital outlay and inventory. But he's hoping to expand, show some profit, and perhaps buy or make some more presses.

And, oh yes, to mark his claim as a true executive, Chris has his father occasionally work for him as a printer!





# ARGUS ANIVERSARIES



**HERBERT ROBERTS**  
Mechanical Finishing  
15 Yrs.



**GERALDINE OTTS**  
Camera Assembly  
15 Yrs.



**BEULAH NEWMAN**  
Distribution Services  
15 Yrs.



**CAROLINE BANNAN**  
Engineering  
5 Yrs.



**GEORGE BELANGER**  
Tool Engineering  
5 Yrs.



**RUSSELL BULLIS**  
Industrial Engineering  
5 Yrs.



**ROBERT CUNY**  
Engineering  
5 Yrs.



**ED R. DRAGO**  
Camera Assembly  
5 Yrs.



**MARY BURRIS**  
Personnel  
5 Yrs.



**DOROTHY HAARER**  
Personnel  
5 Yrs.



**WESLEY DONALDSON**  
Purchasing  
5 Yrs.



**TED C. STEINBACH**  
Maintenance  
5 Yrs.



**JOHN H. GOSS**  
Spray Paint  
5 Yrs.



**KENNETH CROFF, JR.**  
Quality Control  
5 Yrs.



**MARVIN POTTER**  
Service  
5 Yrs.



**WALTER J. WOJCIK**  
Tool Room  
5 Yrs.



**GERALD E. KARN**  
Industrial Engineering  
5 Yrs.



**ANTHONY L. BELL**  
Maintenance  
5 Yrs.



**JOHN KEENY**  
Personnel  
5 Yrs.



**GEORGE E. SHORT**  
Maintenance  
5 Yrs.



**LEROY F. SEEGER**  
Tool Engineering  
5 Yrs.



**ALBERT PRIESKORN**  
Engineering  
5 Yrs.

*Congratulations!*





# FAMILY CIRCLE

## Carraige Trade

KENNETH FRANK NOVAK  
Born February 18

Weight - 7 lbs. 12 ozs.

Father - Walter Novak, Engineering

GUY WESCOTT III

Born January 2

Father is Guy Wescott, Jr. -  
Spray Paint.

DAVID BRIAN ALT

Born January 22

Weight - 7 lbs. 12 ozs.

Father is Glen Alt, Jr. of Maintenance. David has two other brothers - Glenn, III, and John.

MICHELLE BOWERMAN

Born January 20

Weight - 7 lbs. 1 oz.

Michelle's father is Gerald Bowerman of Maintenance. There are two brothers, Kenneth, 4 yrs. and William, 2 yrs.

ERIC ALLEN NILES

Born January 25

Weight - 7 lbs. 14 ozs.

Father - Raymond Niles - Engineering. Ray has two other children, Sandra, and Raymond.

JOHN ERNEST PRIESKORN

Born January 28

Weight - 7 lbs. 14 ozs.

Albert Prieskorn of Engineering is the proud father. John has two sisters, Bonnie and Linda.

CLARK ALEXANDER KREMER

Born February 13

Weight - 8 lbs. 8 ozs.

Mark Kremer, Industrial Engineering, is now the father of three boys. The others are Bruce, 3-1/2 yrs., and Steven 1-1/2 yrs.

## Party for Pat Hominsky

A remembrance gift of luggage was presented to Pat Hominsky - Shipping - when she left Argus on January 9th to rejoin her family in Pennsylvania. We all wish Pat the best of luck and want her to know we miss her very much.

## Wedding Bells



Marjorie O'Donnell and William Miller were united in marriage on Saturday morning, January 17 in St. Thomas Catholic Church. The bride is the daughter of Mr. and Mrs. Joseph P. O'Donnell (Joe works in Final Product Control) of W. Washington St. The bridegroom's parents are Mr. and Mrs. Clair Miller of Pinckney.

Miss Maureen O'Donnell, sister of the bride, and Richard Miller of Pinckney, brother of the bridegroom, attended the couple as maid of honor and best man. Patricia O'Donnell, another sister of the bride, was flower girl, while her brother, Francis, assisted in seating the guests. An evening reception was held at the Gregory Town Hall.



Charles Foley (Engineering) and Joy Bicknell were married on January 10 in St. John Berchman Church, Detroit. A reception was held following the ceremony at Hillcrest Country Club in Mt. Clemens. The couple honeymooned in the Laurentian Mountains, Ste. Agathe, Quebec, at the Laurentide Inn.

The bride's parents are Mr. and Mrs. J. Newton Bicknell of Detroit. The bridegroom's parents are Mr. and Mrs. LaVergne Foley, also of Detroit.

Kenneth Rice, Polishing, was married to Sandra Fox on February 7th. The ceremony took place at St. John's Catholic Church in Ypsilanti. A reception followed at Union Hall in Ypsilanti. Congratulations, Ken and Sandra!

Janice Gidley (Advertising) and Theodore Cooch, both of Ann Arbor, were married at 4:00 P.M. Saturday, February 14. The wedding took place at the Episcopal Church in Dexter, Michigan. After a two week honeymoon in Florida, they will make their home at 1428 Marlboro in Ann Arbor. We offer our congratulations and best wishes to Jan and Ted.

A combination baby and bridal shower was given for Dorothy Ristenbatt and Jan Gidley (Advertising) at Mary Lou Anderson's home on February 4. Ginny Brumley assisted Mary Lou as hostess.

## Around the Shop

There haven't been any weddings or births in the Paint Shop (at least none that we know of), but Ethel Huffman scoured around and dug up a little news, anyway.

Latest reports are that Harold Luckhardt is driving a new Pontiac these days. He has certainly had good weather to break it in - with all the ice. And speaking of ice, we understand Mr. and Mrs. Robert Allan felt they were lucky to get home on New Year's eve without being "bitten". If you see Bob, ask him about it -- it's an interesting story. Have you heard anyone speak of their New Year's eve "slumber party"? There were several, due to the sleet storm.

On the sick list this past month are Ethel Sinelli who cracked some ribs on New Year's eve and is still not back to work; Herbert Roberts, who has been ill for several weeks but is back on the job now, and Rose Hubbard, who we hope is back by the time you read this.



**Bowling**

**MEN'S DAY SHIFT**

With only two months remaining of the bowling season, there are six teams that are separated by only eight points from first to sixth place. At the present time the Argusnots are in first after knocking off the McDonald's Drive Inn for three points on position night. The Argusnots started out the season as a dark horse and have been steadily climbing up the position ladder until they have reached the top position. This team consists of such kegelers as C. Rothfuss, R. Ross, D. Ray, D. Dempsey, and M. Geiger. The question is, "can they stay there?" Ask the teams that are below them. Another dark horse team which has climbed to third position is the Atomic Five. You cannot count out such teams as McDonald's, Thirsty Five and Green Hornets.

In case any of you get disgusted with your bowling, just remember that even the good bowlers have their bad night just like everyone else. This can be verified by the "Red Head" on the Thirsty Five team. But this does not discourage him, he just shakes it off, buys a new ball, and keeps on bowling.

Will the standings remain the same in the next couple of months as they are now?

**Argus Mixed Doubles**



The 1959 Argus Mixed Doubles was won by John and Betty Shattuck. John and Betty took top honors from a field of sixty-four couples. Besides taking top money, the Shattucks also received trophies which were donated by the 20th Century Bowling Allies. L. Gala rolled the highest game for the women, which was 221 (actual), and J. Fraser rolled 223 for the men.

On behalf of the members of the Mixed Doubles, I want to thank the Tournament Committee for their effort and time that was spent in making this tournament possible.

**Tournament Committee:**

- |              |            |
|--------------|------------|
| B. Martin    | R. Leggett |
| R. Rodriguez | D. Crump   |
| J. Miatech   | Wm. Betke  |
| G. Bock      | J. Cope    |

**Standings:**

	<u>Won</u>	<u>Lost</u>
1. Lucky Strikes	51	33
2. Argusettes	48.5	35.5
3. Big D's	46.5	37.5
4. Shutter Bugs	45	39
5. Flashes	40	44
6. Keyliners	21	63

- High Game (actual) - E. Geiger - 221
- High Series (actual) - E. Geiger - 530
- High Team Game (actual) - Lucky Strikes - 771
- High Team Series (actual) - Lucky Strikes - 2237

Barbara Preston rolled a tripligate score, and will receive an award from W.I.B.C. for this feat.

**Cribbage**

The winners of the Cribbage Tournament were J. Borgerson first, J. Sartori second, and J. Kenne third. The winner will represent Argus in the City Cribbage Tournament. We all wish John Borgerson the best of luck and hope to see his name in the finals.

	<u>Won</u>	<u>Lost</u>		<u>Won</u>	<u>Lost</u>
1. Argusnots	54.5	37.5	8. Thirsty Five	46	46
2. McDonald's Drive Inn	54	38	9. Lions	44.5	47.5
3. Atomic Five	51.5	40.5	10. Scrubs	44.5	47.5
4. Bud Twining Service	51	41	11. Renegades	42	50
5. Argus Q. C.	49.5	42.5	12. Shipping	37.5	54.5
6. Green Hornets	48	44	13. Braves	37	55
7. Maintenance	47	45	14. Highballers	37	55

High Game (actual)	- D. Crump	- 267	High Series (actual)	- G. Alt	- 615
High Game (handicap)	- J. Cope	- 267	High Series (handicap)	- G. Mordsky	- 657

Note - Men, do not forget the bowling banquet which will be on Friday night, May 8, at the Moose Lodge.



# argus eyes

Published every other month for the employees  
of Argus Cameras and their families.  
Coordinator - Dorothy Haarer

**REPORTERS:** Machine Shop - DOROTHY LIXEY, Purchasing -  
DONNA BISBEE, Lens Processing - BETTY SHATTUCK,  
Maintenance - JOHN KOKINAKES, Engineering - HECTOR  
HAAS and CAROLINE BANNAN, Standards and Production Plan-  
ning - VIRGINIA BIRNEY, Toolroom - BILL FIKE, Account-  
ing - CAROL WHITE, Service - TOM KENTES, Suggestion  
Office - PAUL McCOY, C4 and C44 Assembly - THRESSEL  
CONLEY, Sales - LOIS ELKINS, Paint Shop - ETHEL HUFF-  
MAN, Night Shift - CONRAD GANZHORN, Shipping - MARY  
JANE ALEXANDER.

Feature writers: Clint Harris  
Andy Argus; Don Crump  
Photoprinting: Jan Gala  
Photography: Wilma Simmons  
Jan Gala

MATERIAL MAY BE REPRINTED WITH CREDIT TO  
ARGUS EYES

# ARGUS CAMERAS

Division of Sylvania Electric Products, Inc.

ANN ARBOR, MICHIGAN

Return Postage Guaranteed

Donald Crump  
366 Pinewood  
Ann Arbor, Mich.

Sec. 562, P. L. & R.

U. S. POSTAGE  
**PAID**

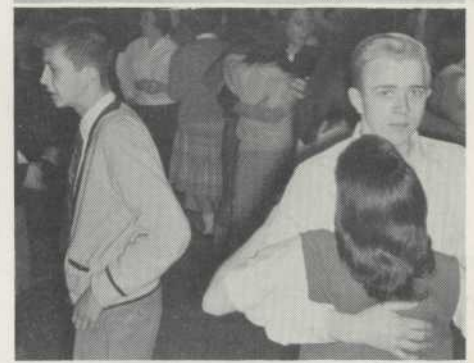
Ann Arbor, Michigan  
Permit No. 598



## Fun for Everyone at Argus Teen-age Parties



Everybody, including the chap-  
erones, has fun at the Teen-Age  
parties, as indicated in these pic-  
tures snapped at the last affair.  
Larger turnouts are evident at each  
of the dances which are scheduled  
twice a month in the Argus cafe-  
teria. Continued success of these  
parties depends greatly on vol-  
unteer help from adults who are  
willing to spend a couple of hours  
of their time at these dances. Some  
of those who have graciously assist-  
ed us so far this year are: Mr. and  
Mrs. Fred Fischer, Mr. & Mrs.  
Robert Isaacson, Mr. & Mrs. Fred  
Leeman, Mr. Les Schwanbeck, Mr.  
Donald Crump, Mrs. Jim Swaney,  
Mr. Vern Peterson, Mrs. James  
Thompson, and Mr. & Mrs. John  
Kenne. Anyone who is interested  
in helping out may contact Mr.  
Bill Betke at Argus, or Mr. or Mrs.  
Betke at their home - NO 2-6925.  
At the last party one mother was  
overheard to say, "It sure makes  
you feel young again, doesn't it."  
-- So let's have some more vol-  
unteers.



00.2.538